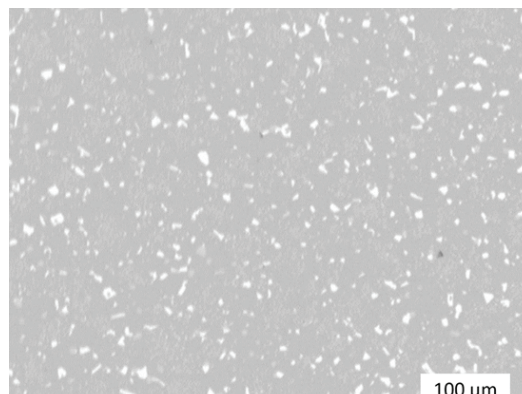


Material datasheet

M2 High Speed Steel

Composition

Composition	Amount
Tungsten	5.5-6.75%
Molybdenum	4.5-5.5%
Chromium	3.75-4.5%
Vanadium	1.75-2.2%
Silicon	0.2-0.45%
Carbon	1.05-1.15%
Manganese	0.15-0.4%
Phosphorous	0.03% max
Sulphur	0.03% max
Copper	0.25% max
Iron	Bal.



Typical Mechanical Properties

	Standard	Tritone as sintered	Tritone heat treated*	Wrought ASTM A600
Ultimate Tensile Strength, MPa	ASTM E8	1195	-	-
Elongation at Break	ASTM E8	2.2%	-	-
Hardness, HRC	ASTM E18	57	66	65
Relative density, %	ASTM B962	>98	>98	-

* Properties of as sintered material are affected by the cooling rate of the sintering process.

* Heat treated according to ASTM A600: Standard Specification for Tool Steel High Speed.



alphacam GmbH
Erlenwiesen 16
D-73614 Schorndorf
Tel.: +49 7181 9222-0
info@alphacam.de

alphacam austria GmbH Handelskai
92, Gate1 / 2. OG / Top A
A-1200 Wien
Tel.: +43 1 3619 600-0
info@alphacam.at

alphacam swiss GmbH
Zürcherstrasse 14
CH-8400 Winterthur
Tel.: +41 52 26207-50
info@alphacam.ch



alphacam.de

.at

.ch