



Function optimization for Additive Manufacturing

Schorndorf 23.10.2024

Agenda

1 Overview Siemens

2 Digital Twin for Products

3 Digital Twin for Production

4 Current Trends in the Product Development workflow

5 Conclusion

Agenda

1 Overview Siemens

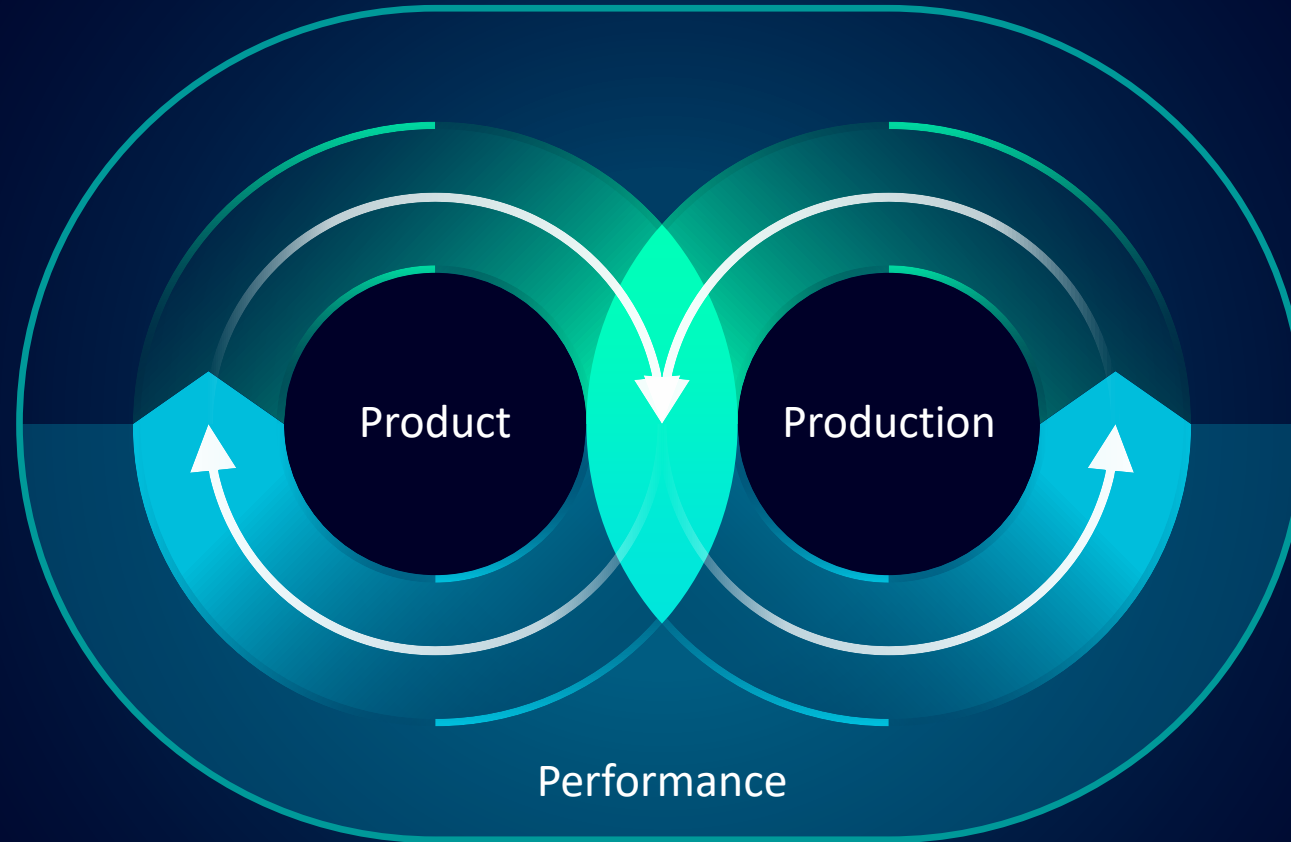
2 Digital Twin for Products

3 Digital Twin for Production

4 Current Trends in the Product Development workflow

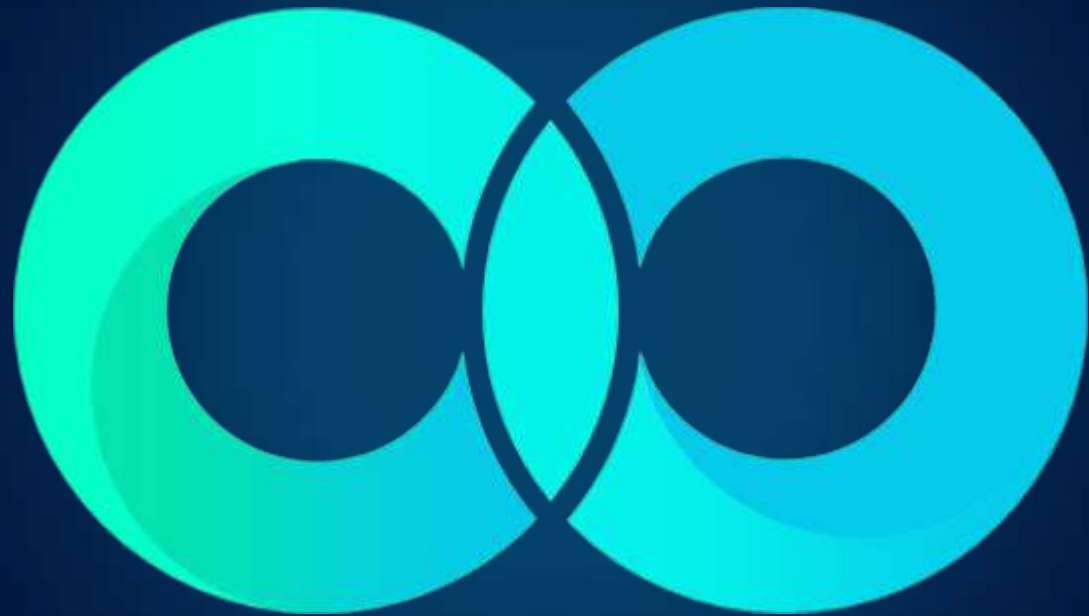
5 Conclusion

Digital world



Performance

Real world



Digital Enterprise



Agenda

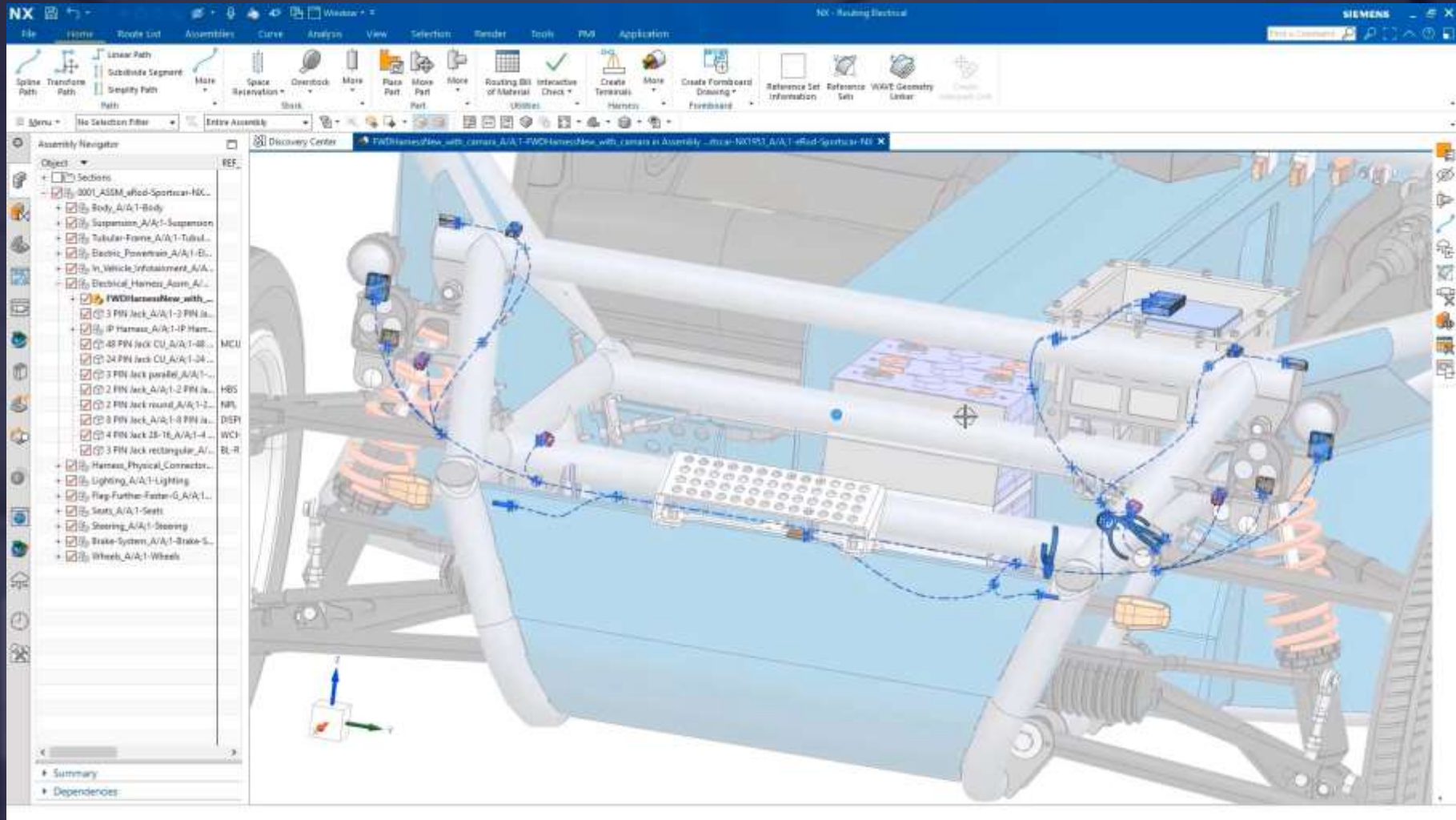
1 Overview Siemens

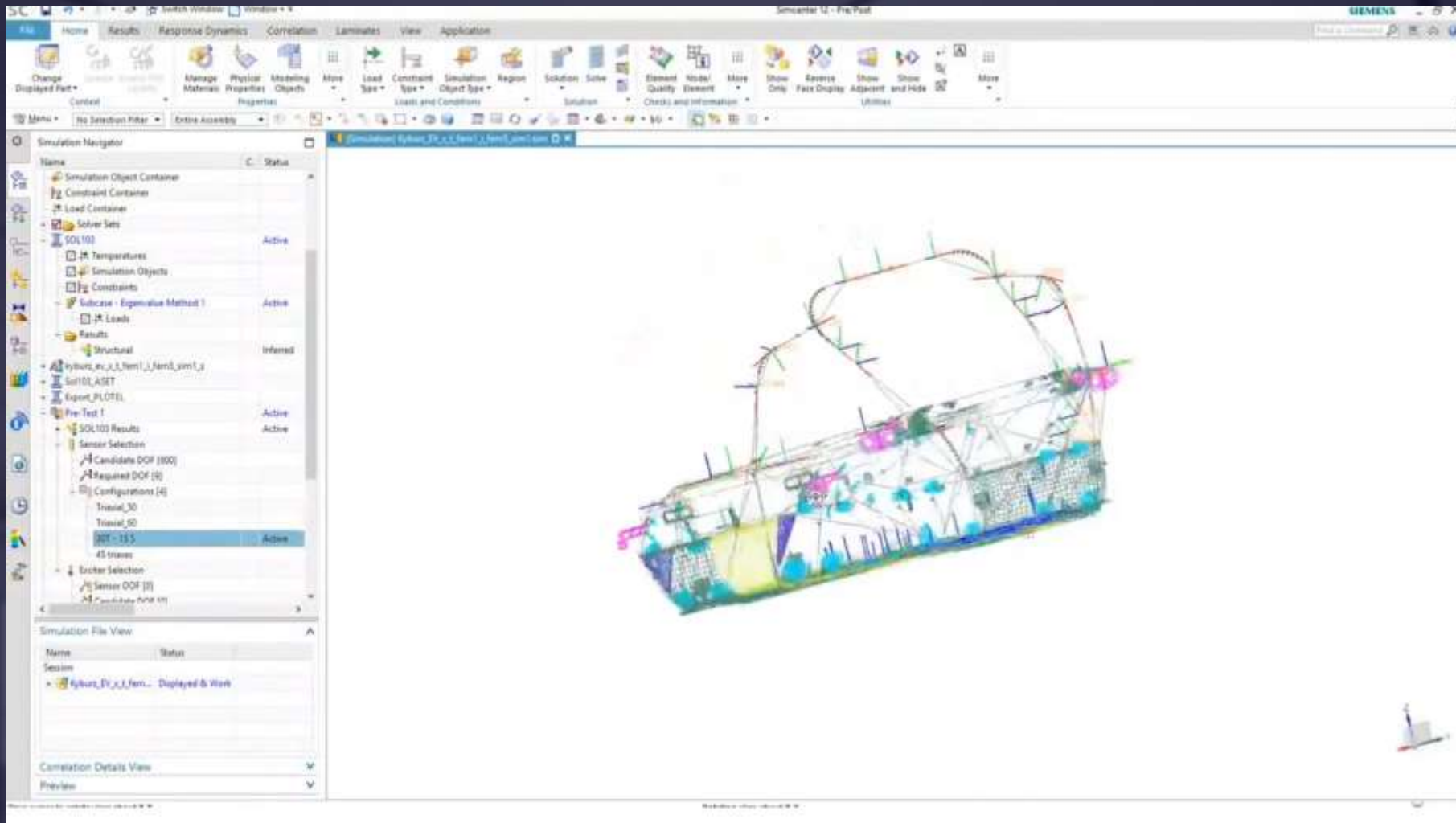
2 Digital Twin for Products

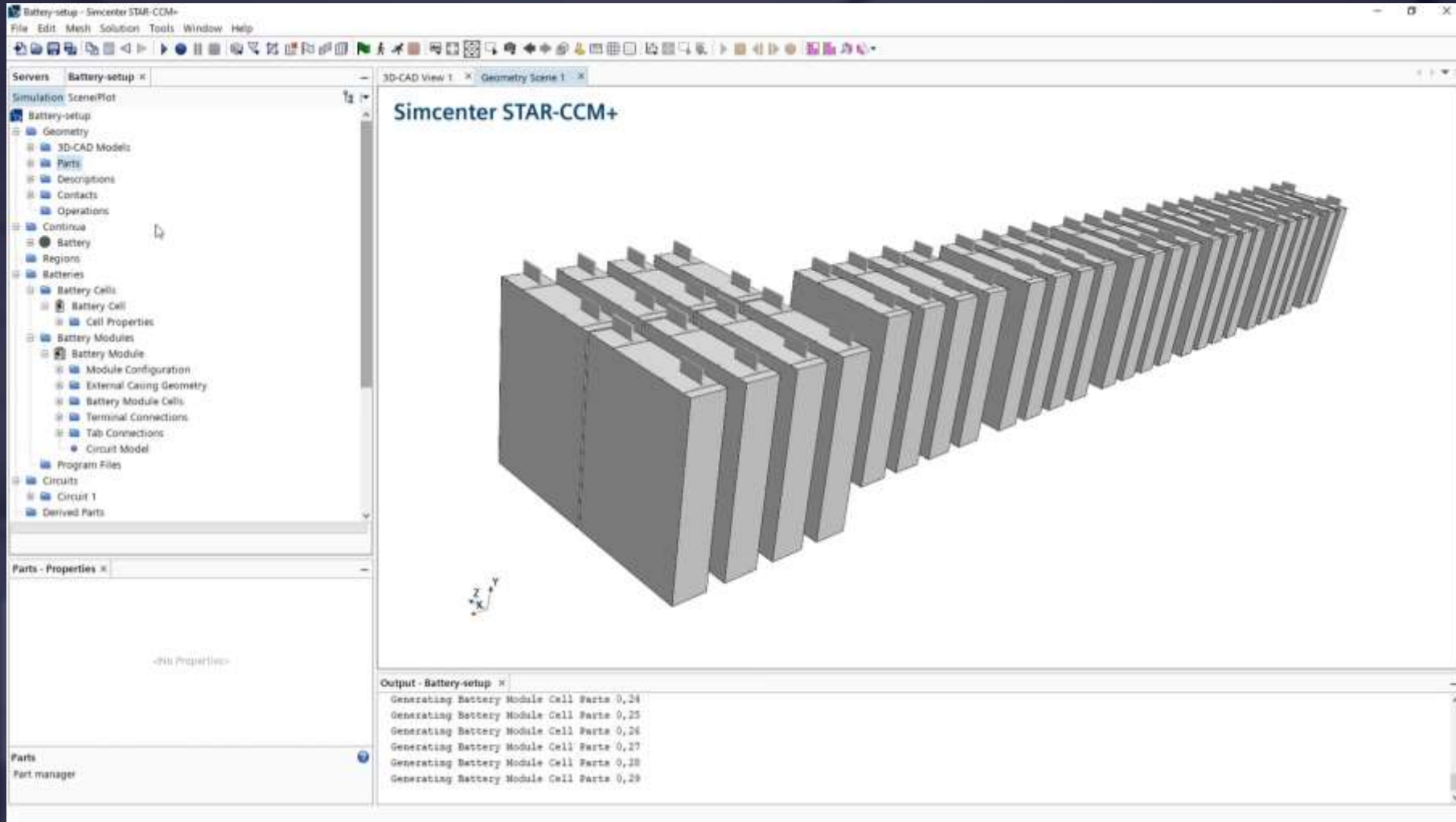
3 Digital Twin for Production

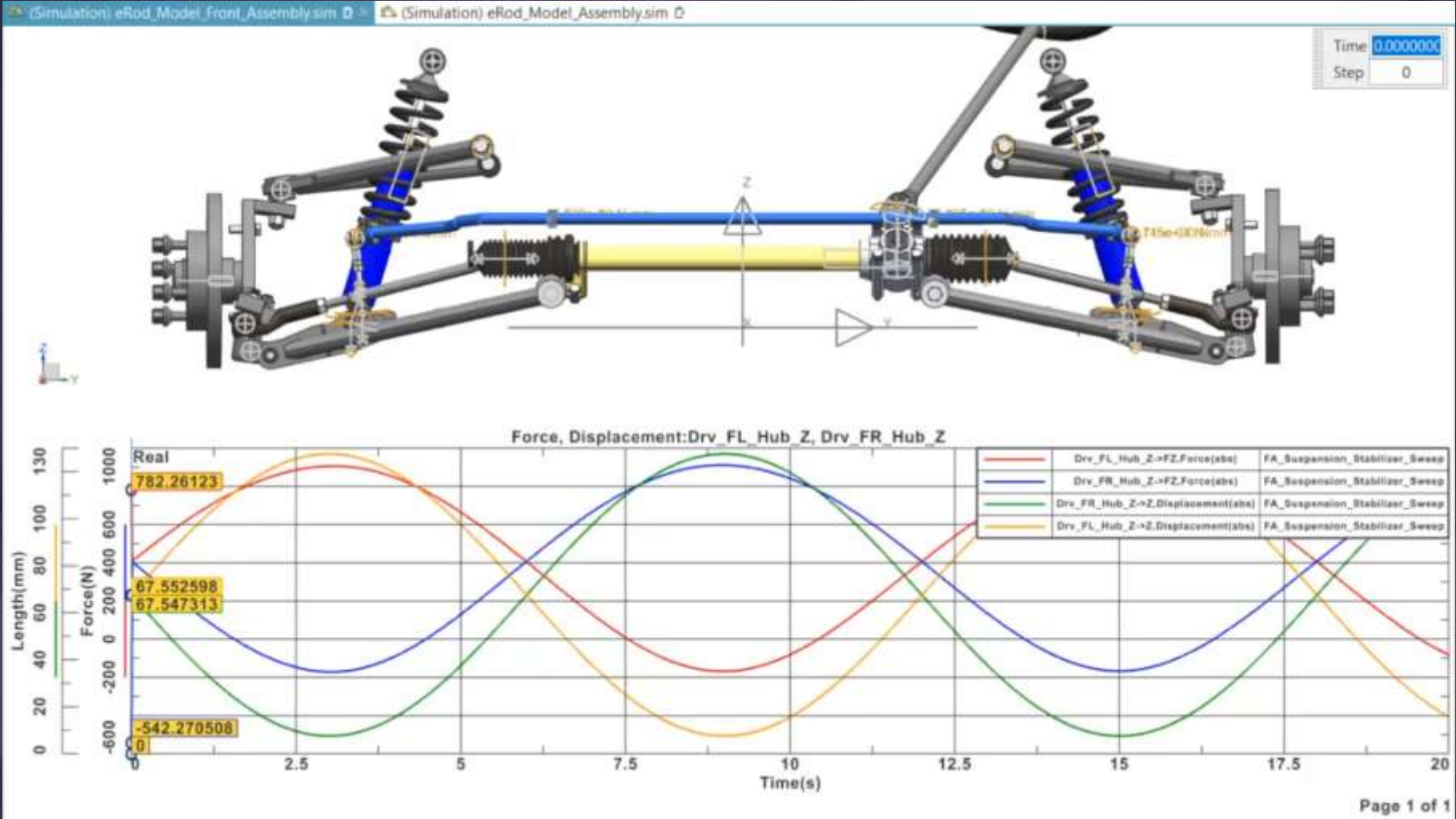
4 Current Trends in the Product Development workflow

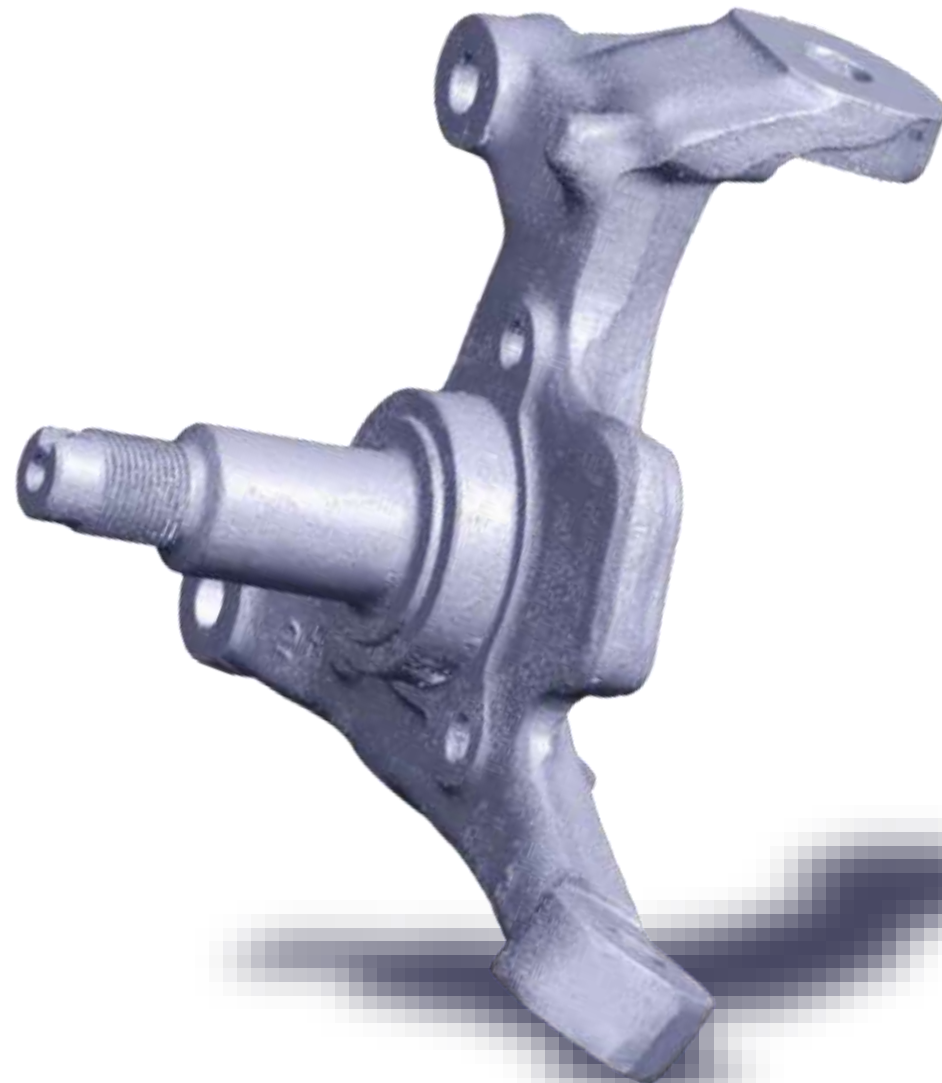
5 Conclusion

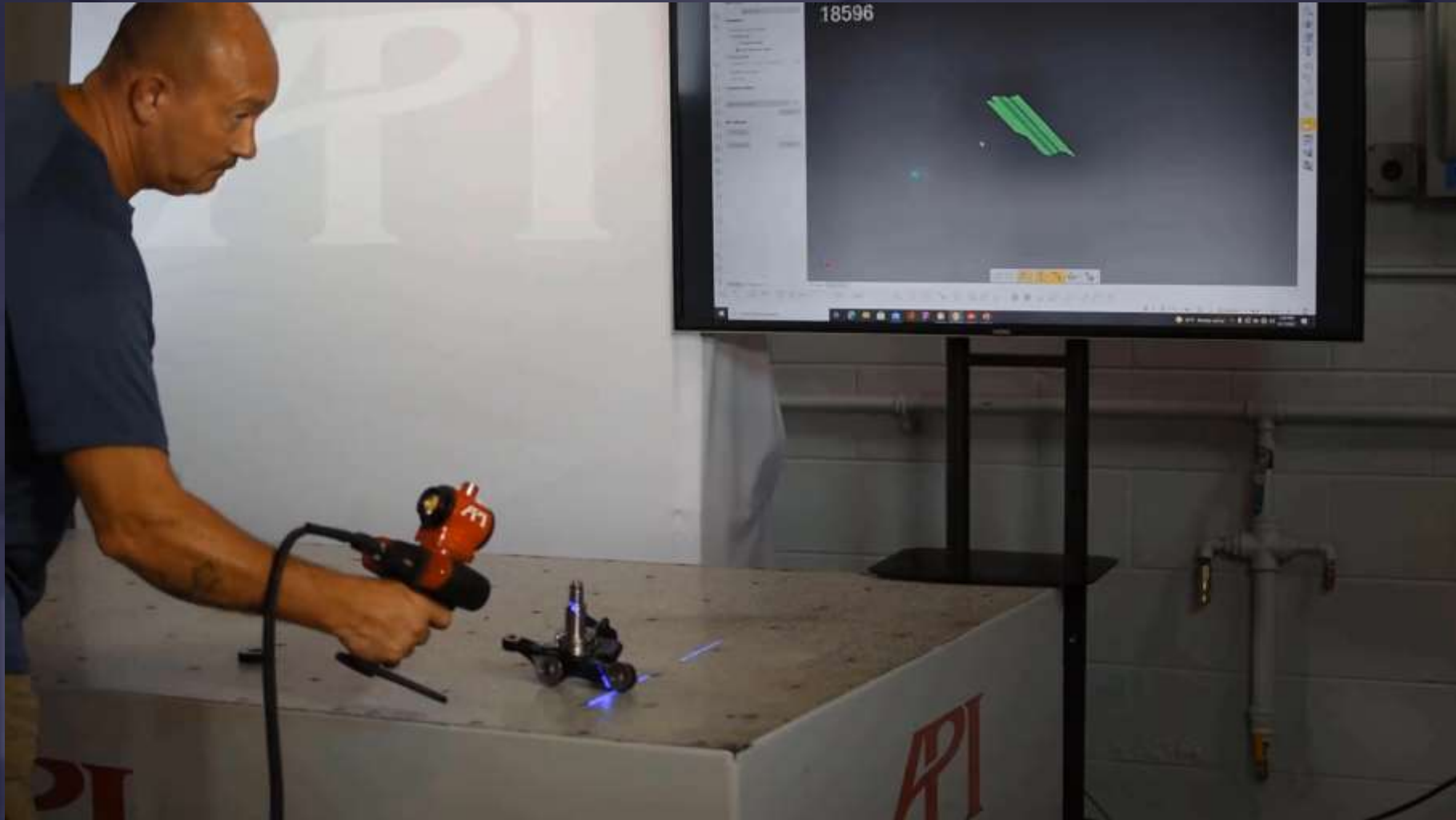








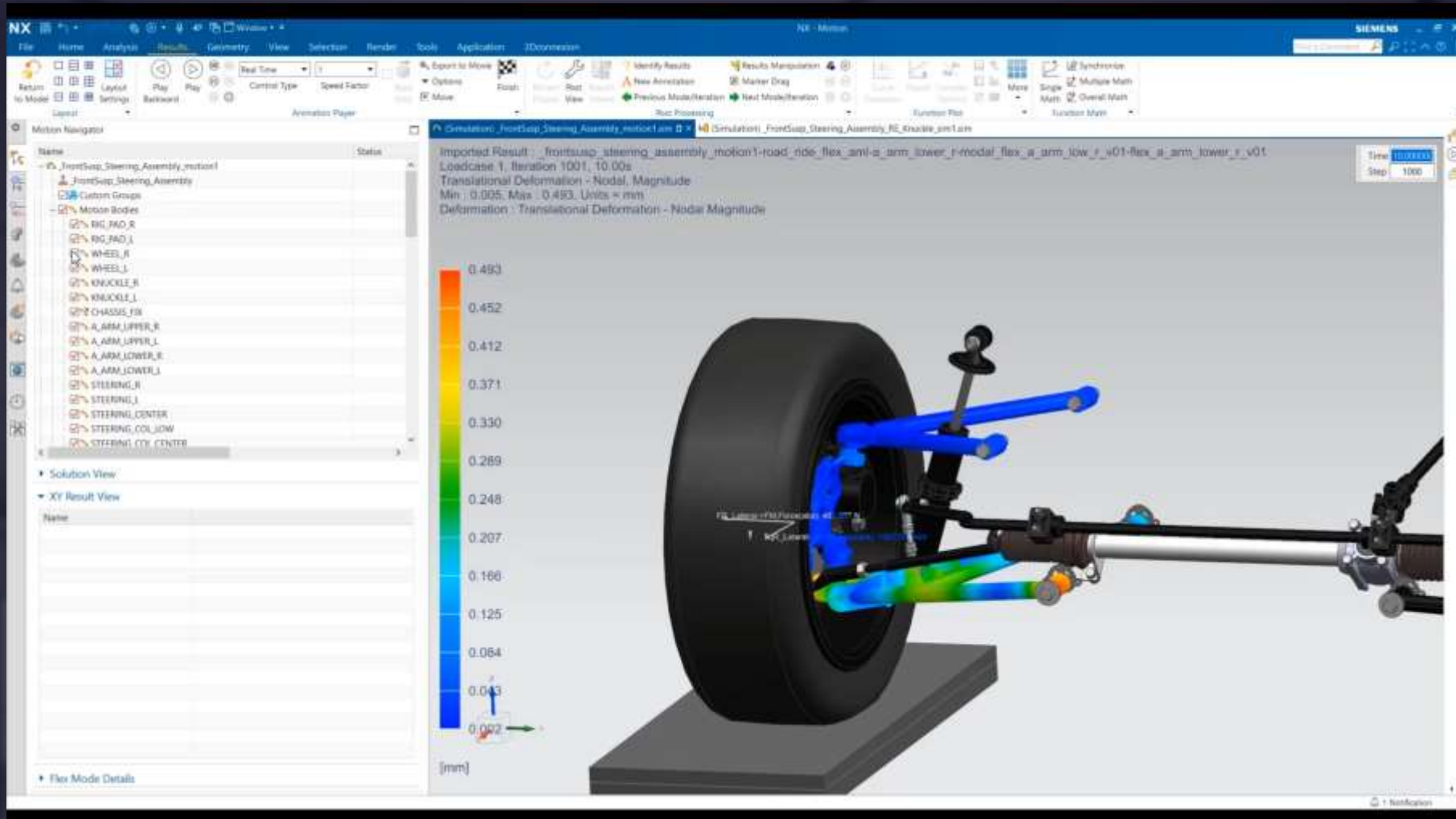






-30%

weight



Agenda

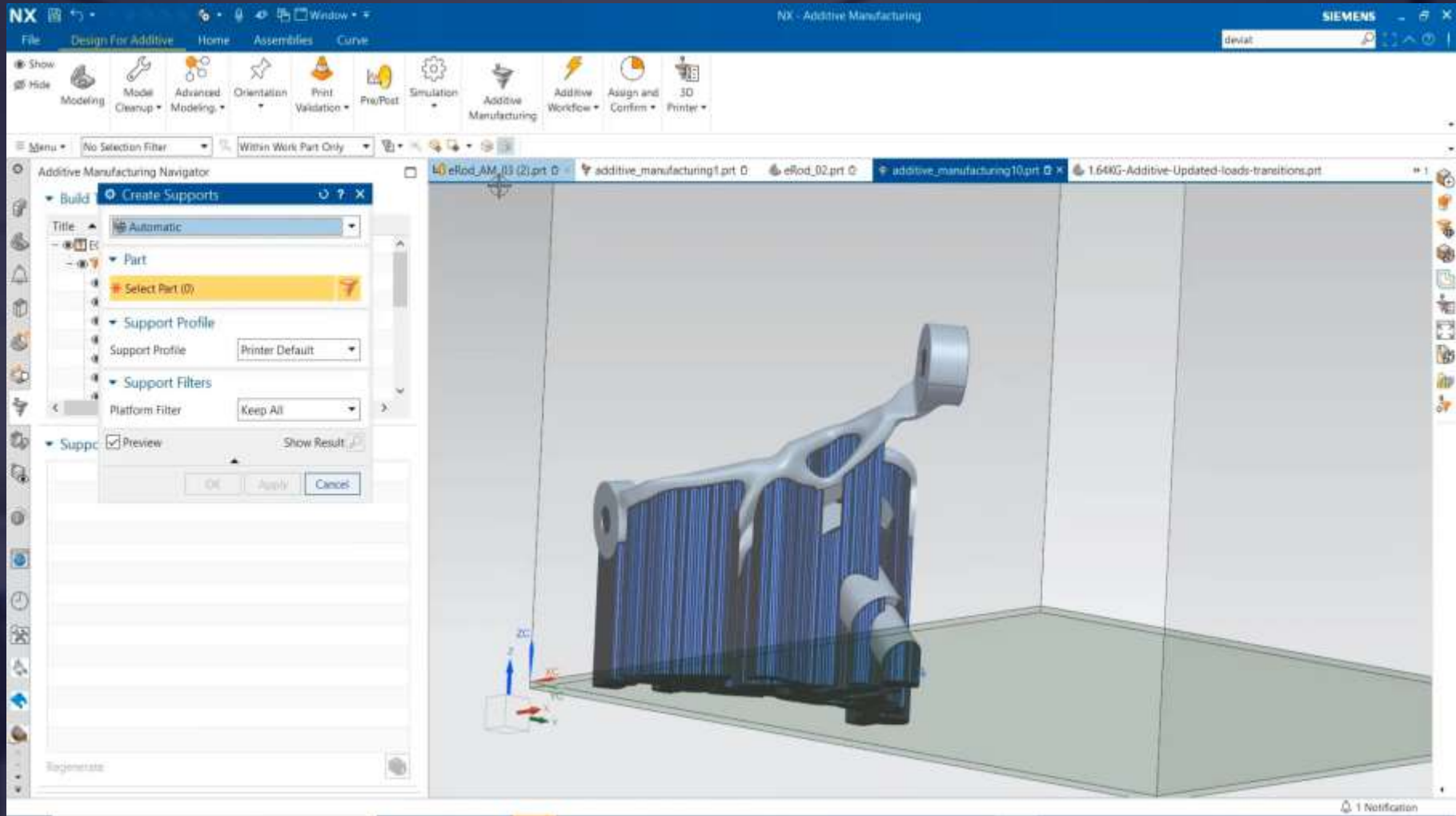
1 Overview Siemens

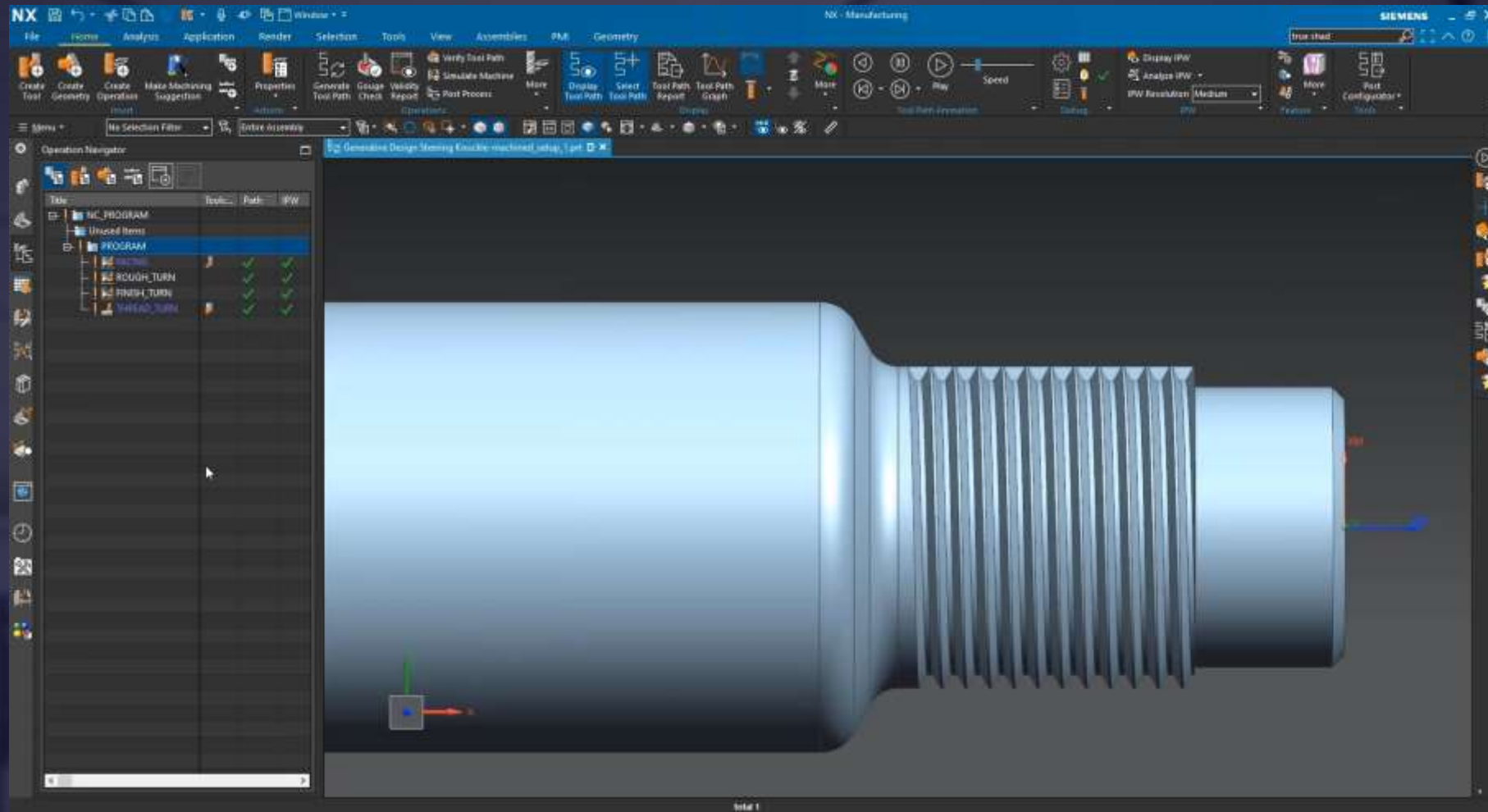
2 Digital Twin for Products

3 Digital Twin for Production

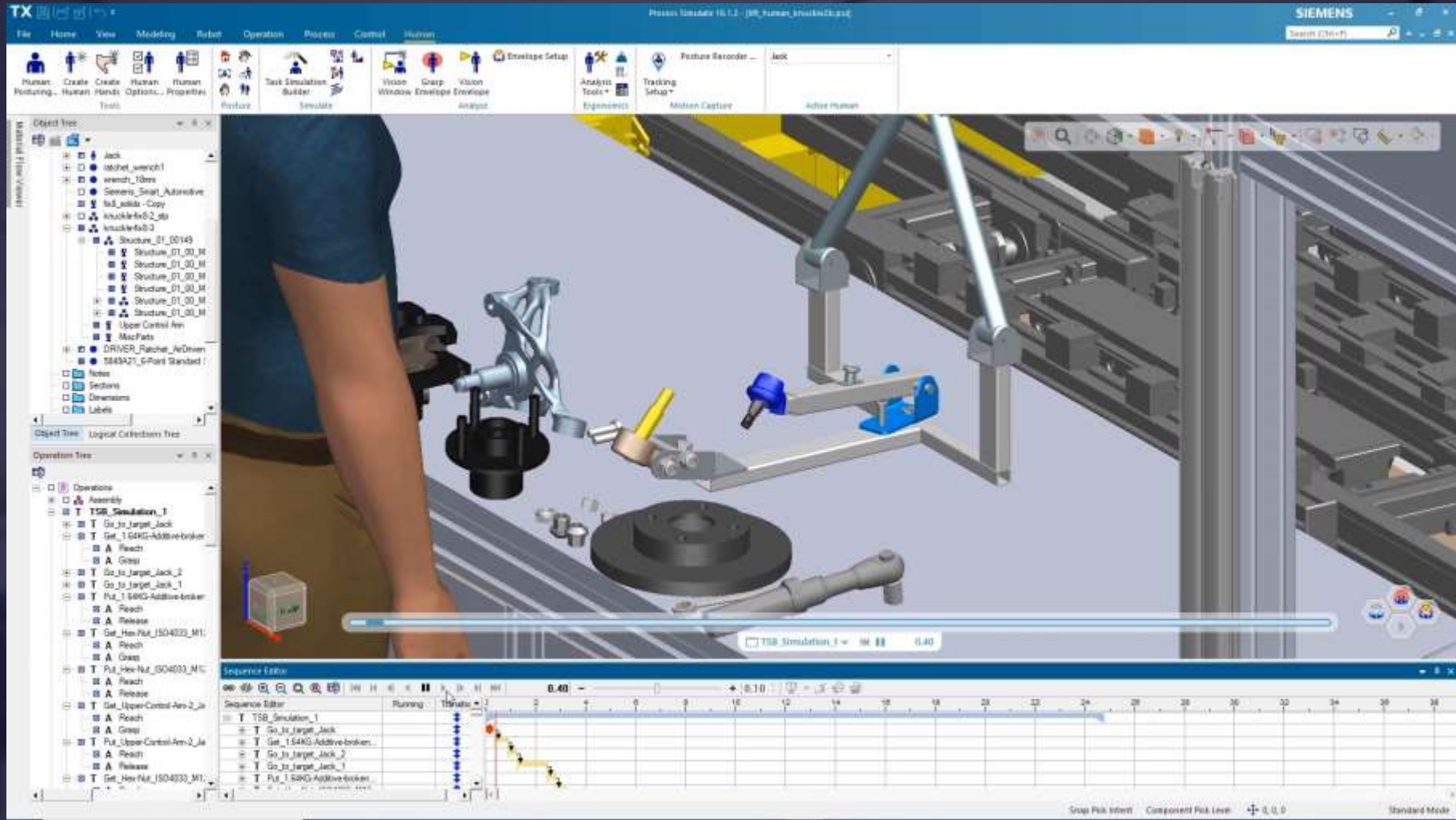
4 Current Trends in the Product Development workflow

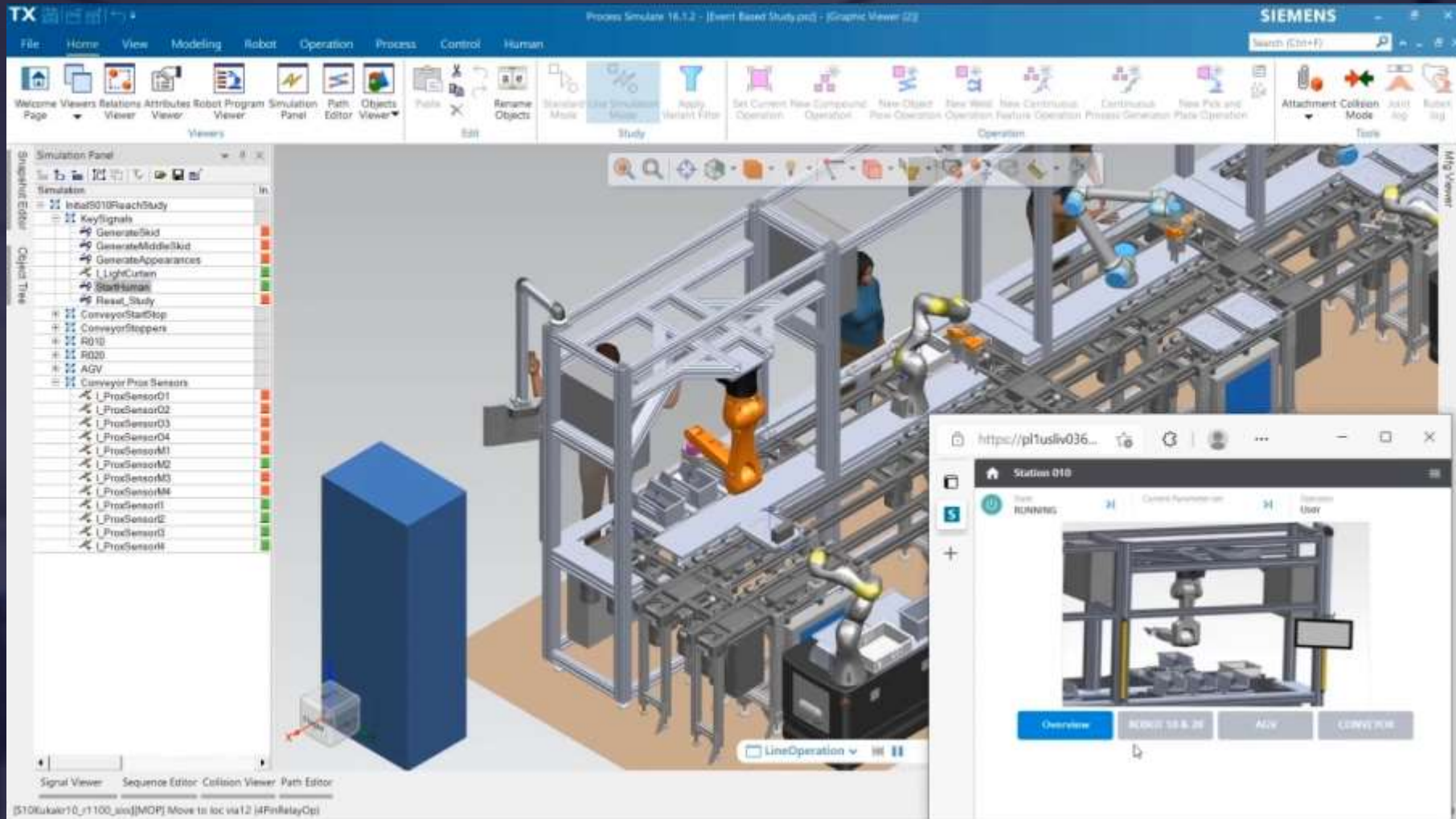
5 Conclusion











Agenda

- 1 Overview Siemens
- 2 Additive Manufacturing Workflow
- 3 Siemens Software Support for Additive Manufacturing
- 4 Current Trends in the Product Development workflow
- 5 Conclusion

Explosion of Complexity in Product Development

Globalization
Regulations
Supply Chains
Additive Manufacturing
Materials
Artificial Intelligence
Nachhaltigkeit
Customization
Safety
Connected Products
Digitization
Efficiency
smart
flexibly
cost-effective

Manage Complexity with Polarion



Data X



Instantly start managing your complexity



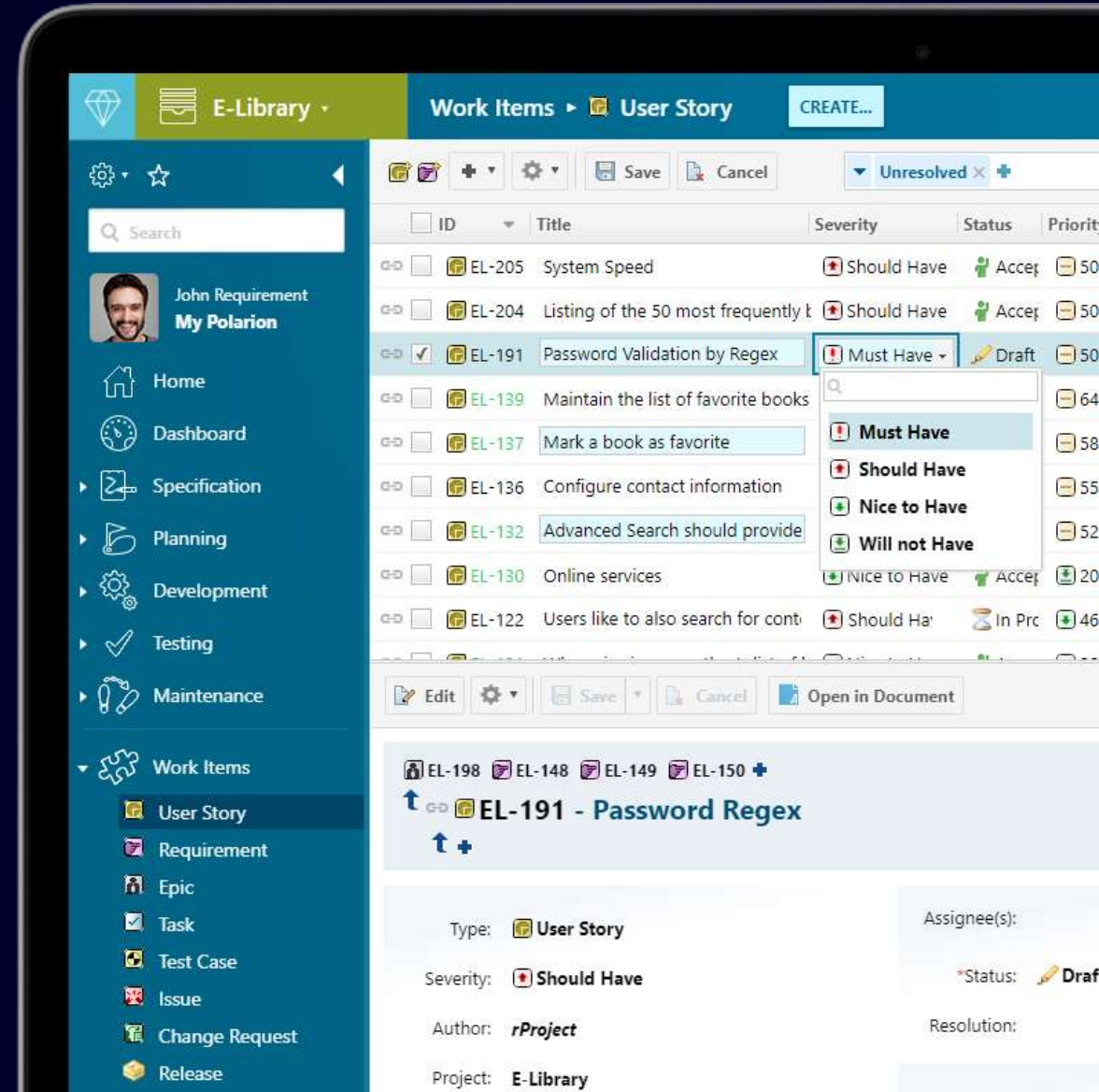
Grows with you
Data / Users / Scalability



Industry Solutions



Apply AI solutions



Manage Complexity with Polarion



The screenshot displays the Polarion AI Supported ALM interface for a project named "E-Library". The main view is titled "Requirements" and shows a list of requirements for the "DrivePilot System Requirement Specification".

- AI-626 - DrivePilot shall be easy to operate without extensive training.**
DrivePilot shall be easy to operate without extensive training. (Must Have, Approved, Release 1.0)
- AI-627 - Before any user may engage DrivePilot on public roads, that user must successful...**
Before any user may engage DrivePilot on public roads, that user must successfully complete a tutorial and test DrivePilot exercise. (Must Have, Approved, Release 1.0)
- AI-628 - Drive Pilot warnings on special conditions**
DrivePilot will disengage with audible, visual notifications if the following occurs:
 - Gear change apparatus is manually actuated
 - Brake is manually engaged
 - User shouts "Stop"
 - Accelerator pedal is manually engaged
 - Turn signal is activated(Must Have, Approved, Release 2.0)
- AI-629 - DrivePilot is NOT compatible with any vehicle that has "auto parking" capability...**
DrivePilot is NOT compatible with any vehicle that has "auto parking" capability. Some models of vehicles come equipped with such capability. Not all models are so equipped, but only when correctly optioned out.

Manufacturer	Model
Toyota/Lexus	Prius, LX200
Volkswagen	Tiguan, Passat/CC,Golf

(Must Have, Approved, Release 1.0)
- AI-630 - DrivePilot shall operate with input power of 12 Volts, not to exceed 15 Amps wit...**
DrivePilot shall operate with input power of 12 Volts, not to exceed 15 Amps with a +/- variance tolerance of 10%. (Must Have, Approved, Release 1.0)
- AI-688 - Initiating the DrivePilot**
The DrivePilot system allows users to initiate and stop the system using a button on the steering wheel. (Must Have, Approved, Release 1.0)

The interface also shows a sidebar with navigation options like Planning, Development, Testing, Maintenance, Work Items, Documents & Pages, and Requirements. A search bar is visible at the top left. The bottom right corner shows metadata for the requirement, including Author: rProject and Project: E-Library.

Apply AI solutions



Artificial Intelligence

Generative development with Azure OpenAI and NX

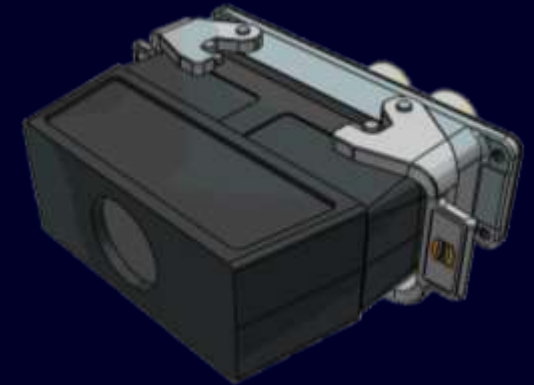
Input in natural language

Extraction of the specifications

Selection/creation of a CAD model

"Hi, I'm Teddy Knurling and I develop power connection cables for the wind power industry. I'm looking for a connector for a project that has two 300 amp contacts at 56 volts and 5 data transmission lines."

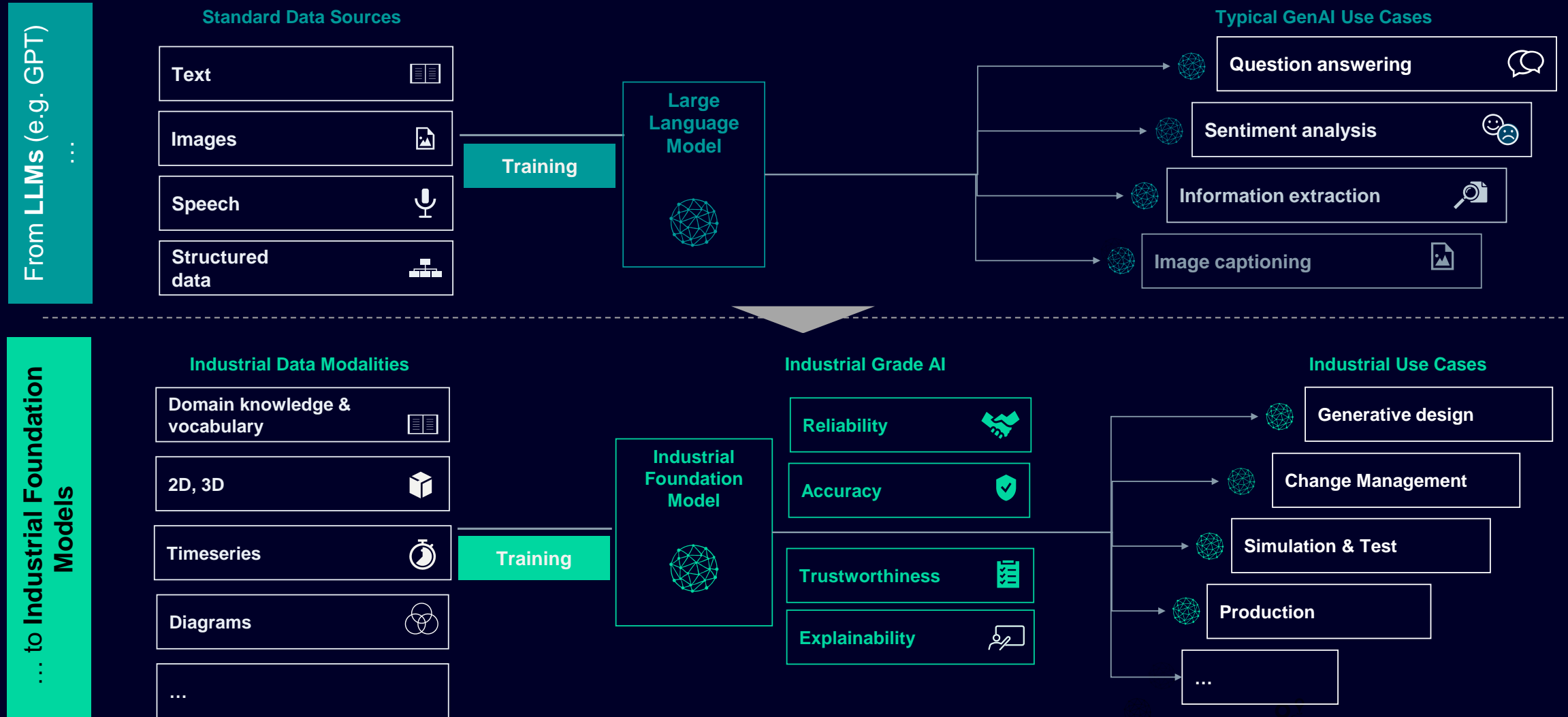
```
spec = {  
  "polution_degree": 4,  
  "housing_material": "metal",  
  "ip_rating": "IP55",  
  "contacts": [  
    {  
      "voltage": 56,  
      "current": 300,  
      "count": 2  
    },  
    {  
      "voltage": 12,  
      "current": 1,  
      "count": 5  
    }  
  ]  
}
```



[Generative development with Azure OpenAI and NX](#)

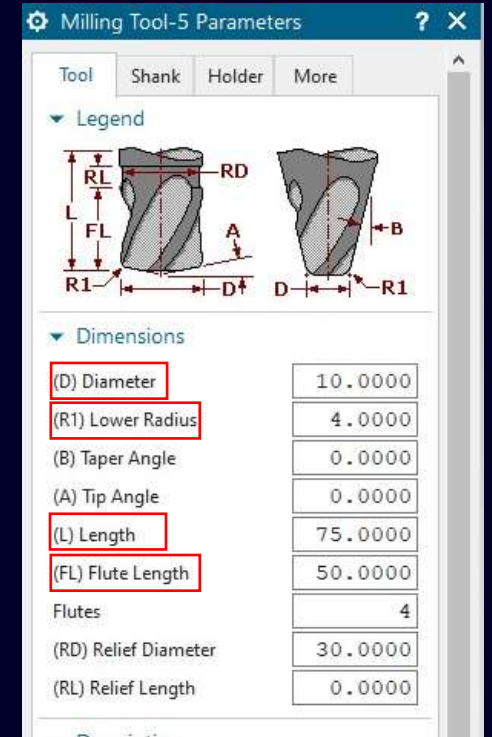
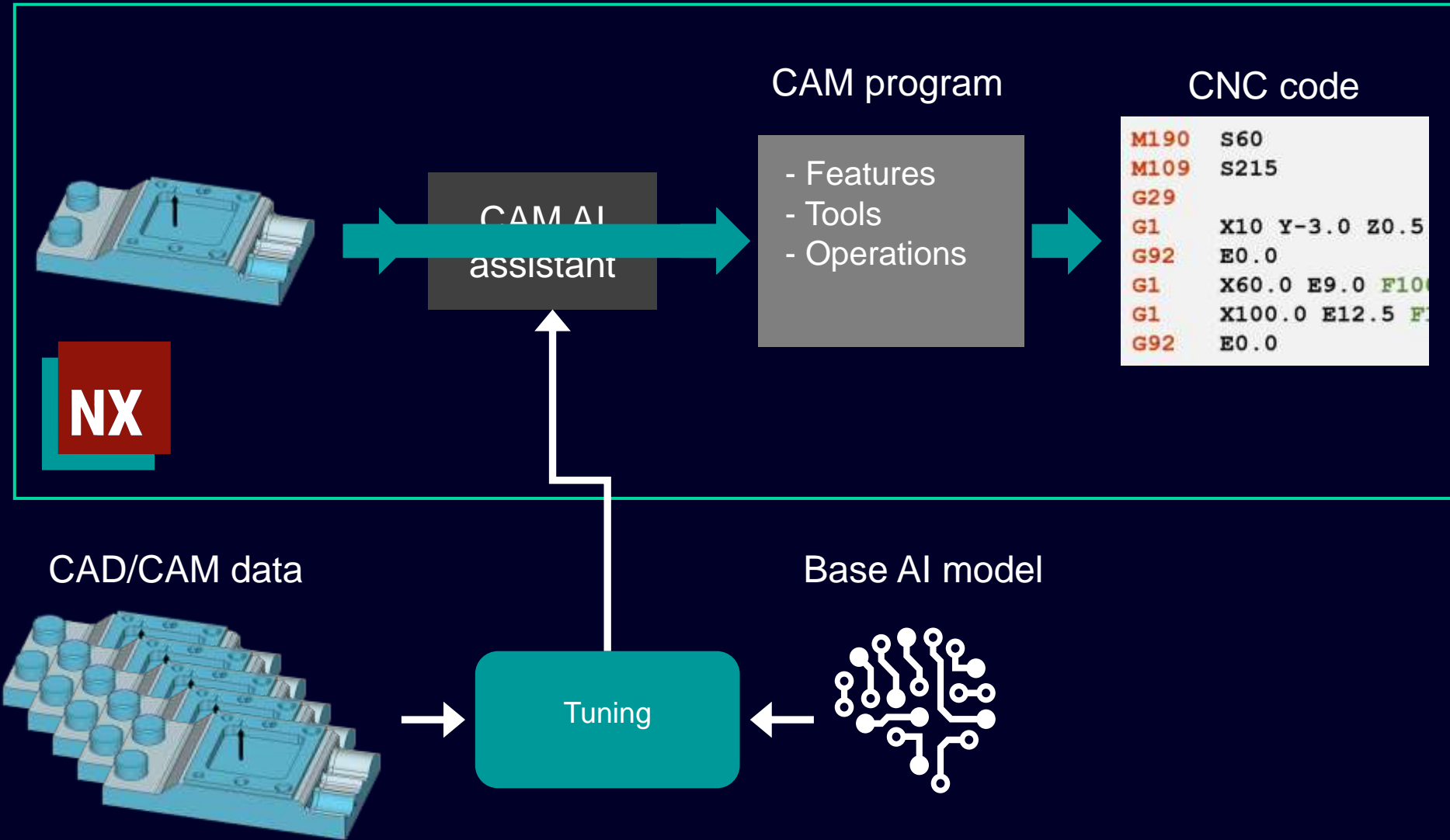
Artificial Intelligence

Large Language Models vs Industrial Foundation Models



Artificial Intelligence

The CAM development process with AI support



Agenda

- 1 Overview Siemens
- 2 Additive Manufacturing Workflow
- 3 Siemens Software Support for Additive Manufacturing
- 4 Current Trends in the Product Development workflow
- 5 Conclusion

Conclusion

- The Siemens Xcelerator enables the complete digitalization of value chains through interconnected software products
- The NX software provides an entire CAD/CAM/CAE platform
- The products already meet requirements in the field of artificial intelligence
- In bilateral activities, AI models can already be used in software products today

The Impact Experience Digital Transformation



| Contact



Alexander Matschinski

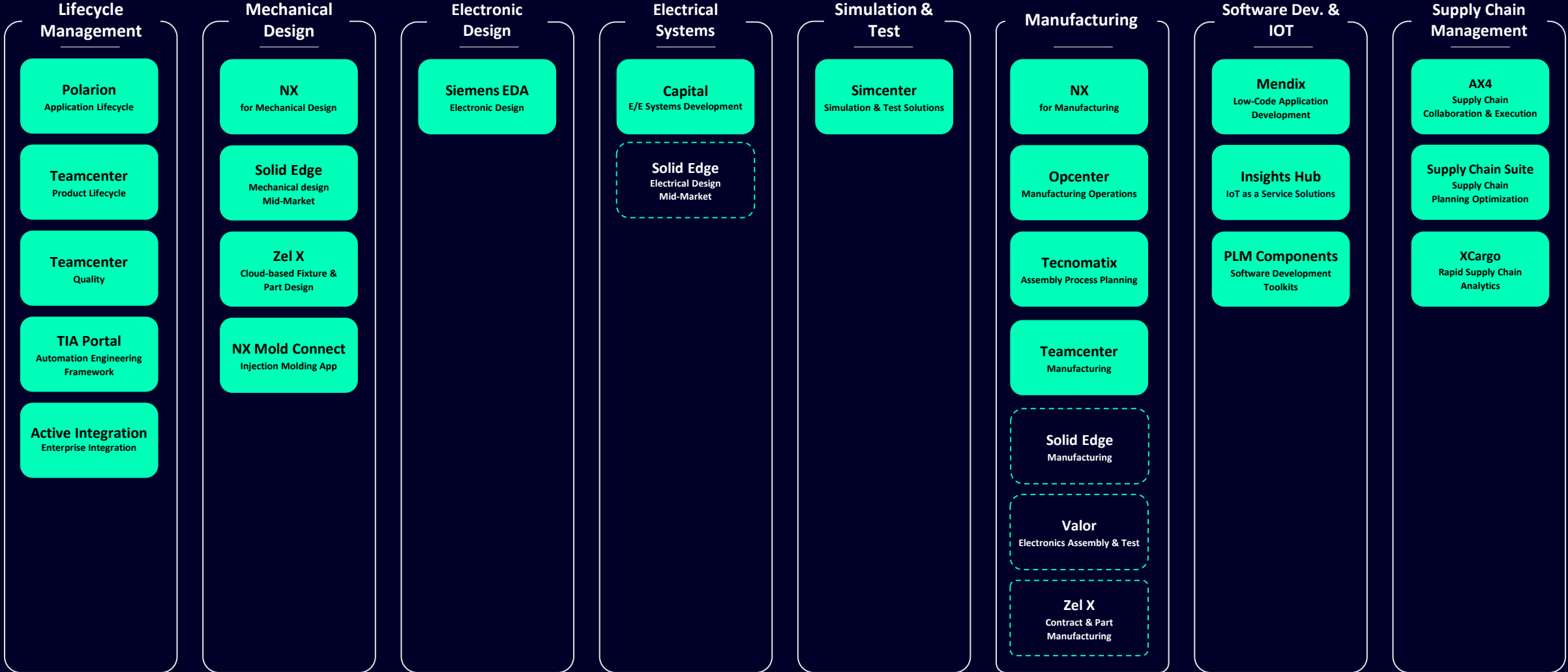
Portfolio Development Executive

+49 152 0976 1276

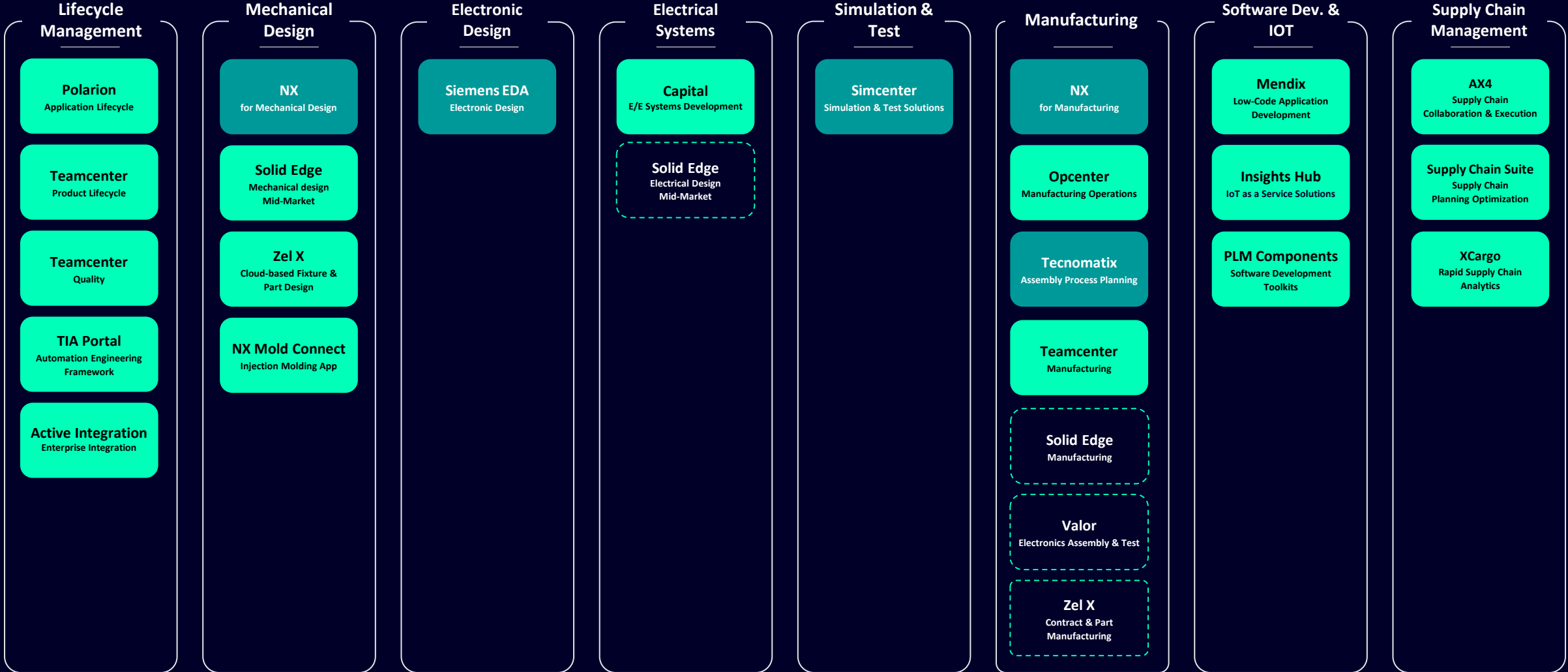
alexander.matschinski@siemens.com



Siemens Xcelerator Software and products



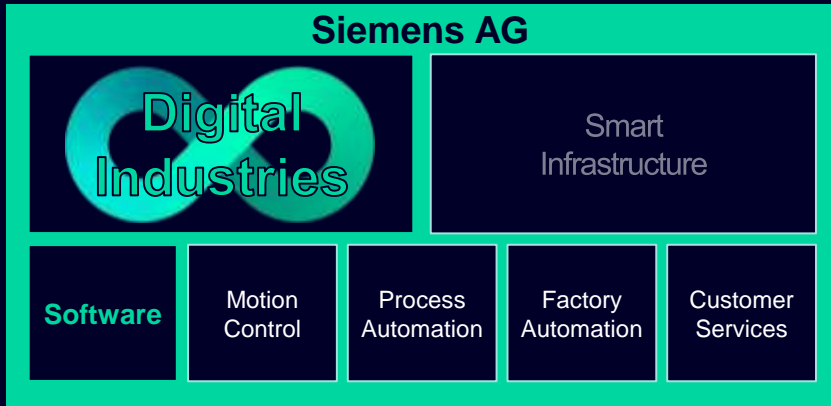
Siemens Xcelerator Software and products



Siemens

your partner to drive digitalization

A strong, long lasting Partner



Siemens DIGITAL INDUSTRIES Software

>30,000 employees worldwide

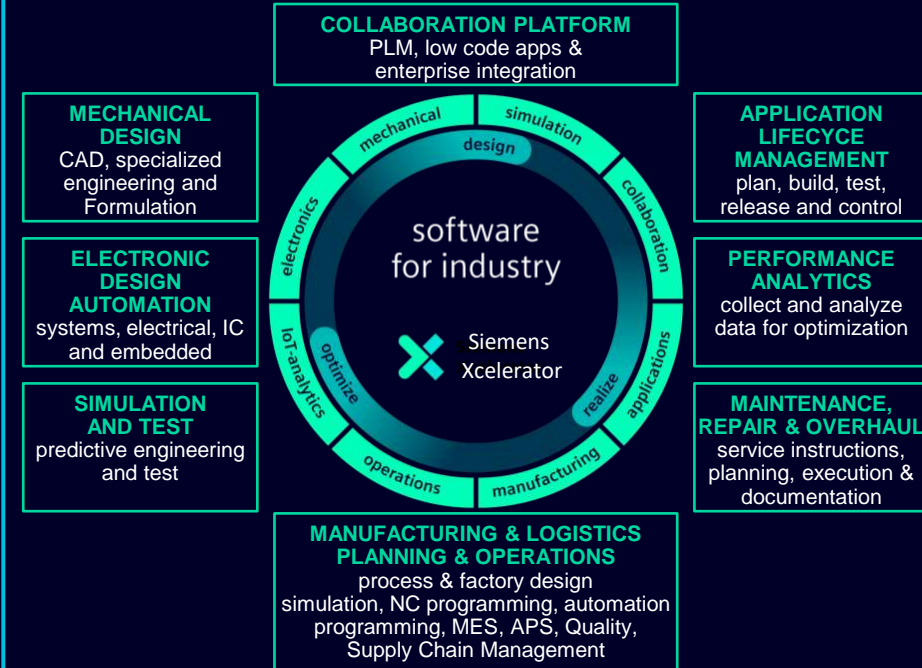
End-to-End solutions between the digital and real worlds to

Digitalize Product Development & Realization

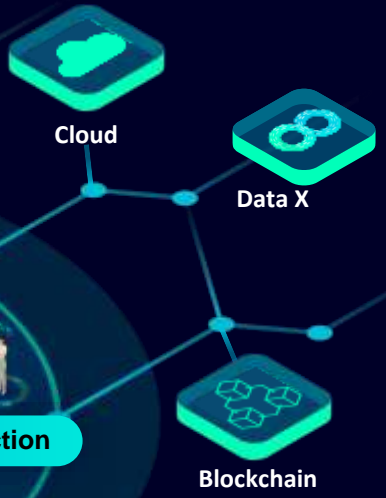
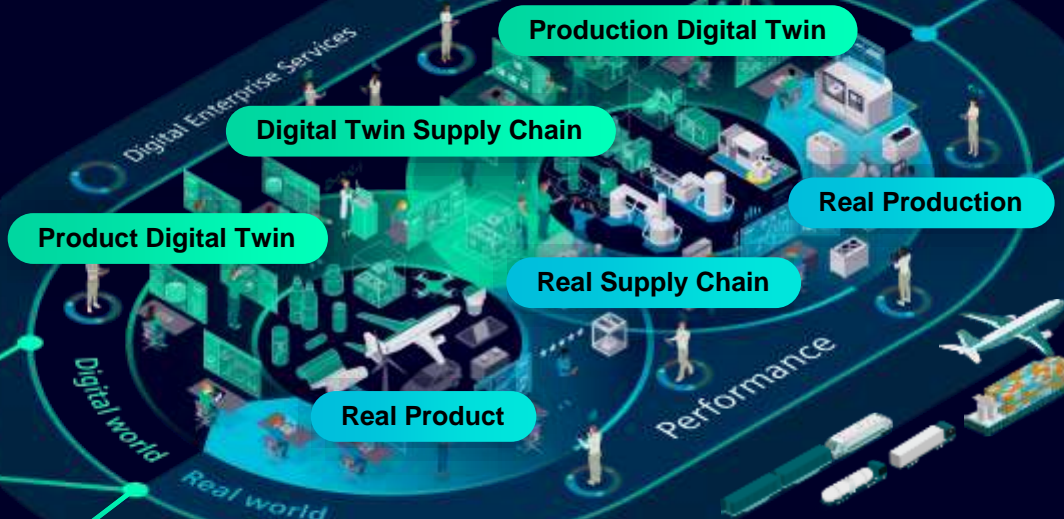
Leader in Industrial Digitalization



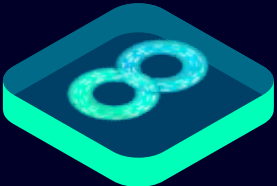
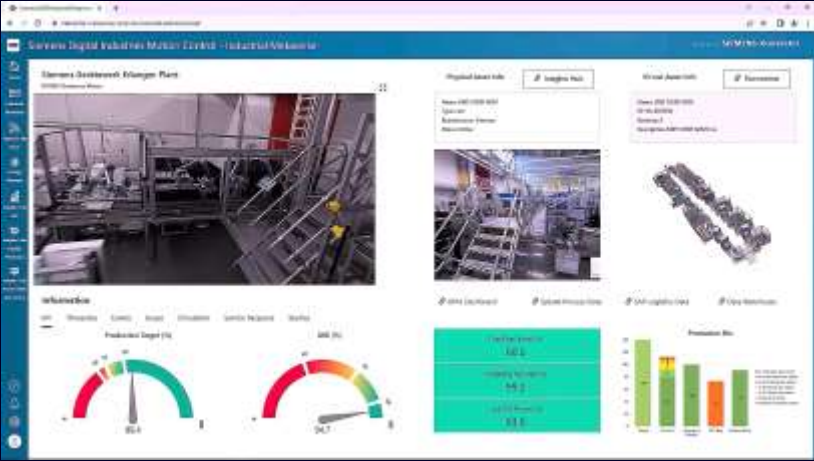
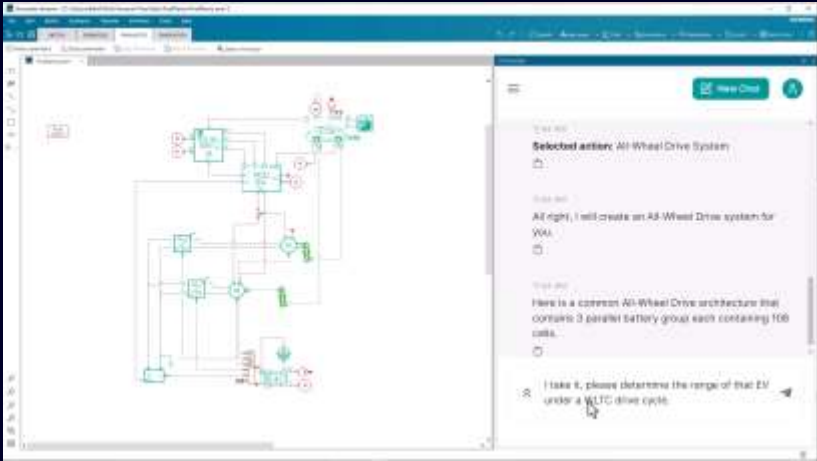
The broadest Portfolio – Xcelerator for the Digital Enterprise



Siemens Xcelerator platform empowers the Digital Enterprise accelerating Innovation, Sustainability & Access to New Technologies to grow further, faster together!



Unleash the Power of New Technologies



Data X

Seamless
Collaboration



AI

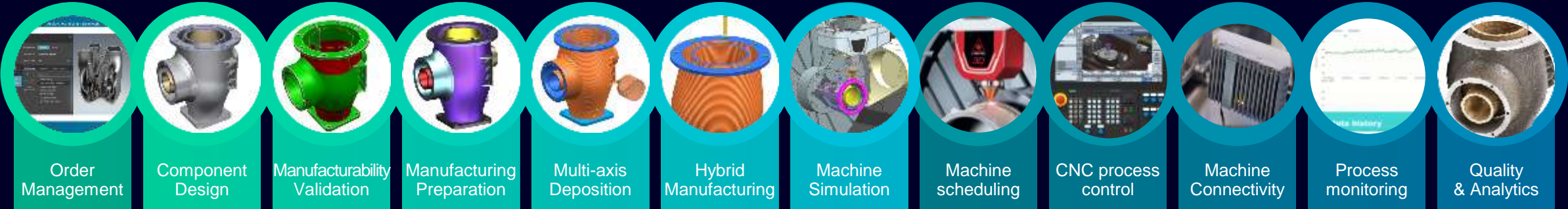
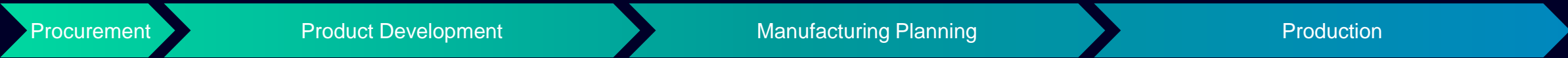
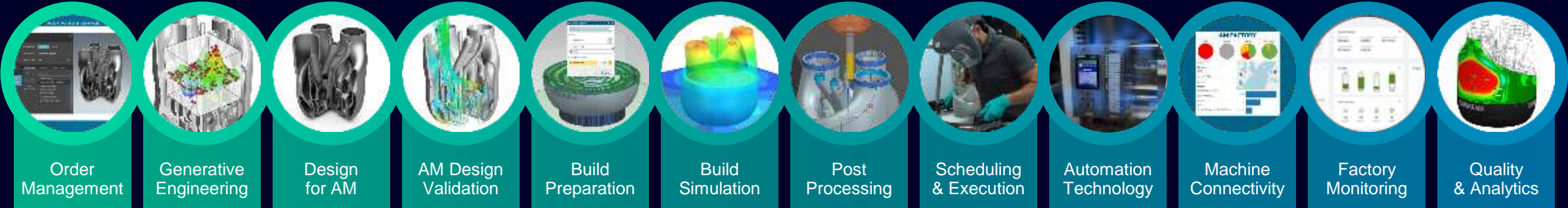
Employ AI



Industrial
Metaverse

See it.
Try it.
Feel it.

End-to-end Additive Manufacturing Workflow

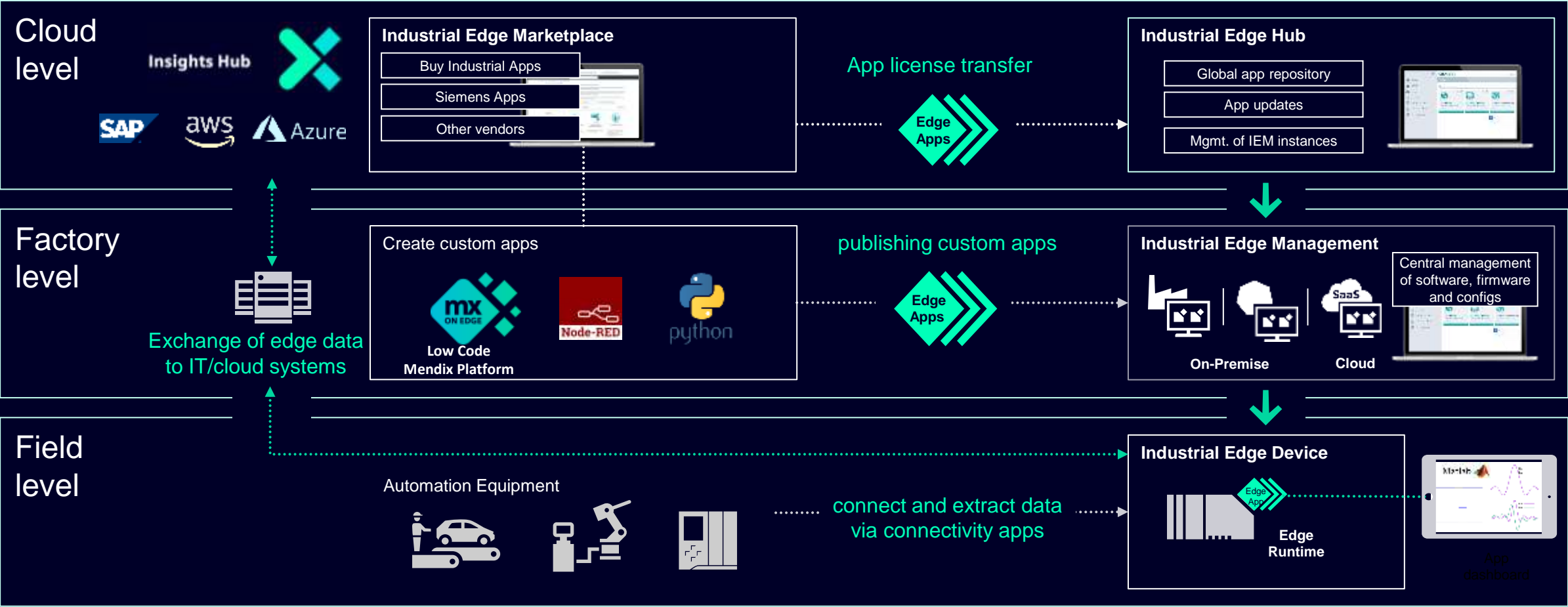


Additive Manufacturing Workflow – Industrial Edge

An open platform to integrate IT mechanisms into the shopfloor in a way software- & data handling becomes scalable, reliable and easy to use.



Industrial Edge Blueprint Architecture



Siemens Xcelerator

Software and products

NX

Mechanical design for product development

Solid Edge

Engineering software for mainstream

Simcenter

Multidisciplinary simulation and testing

Insights Hub

IoT as a Service solutions

Mendix

Low-code application development

Capital

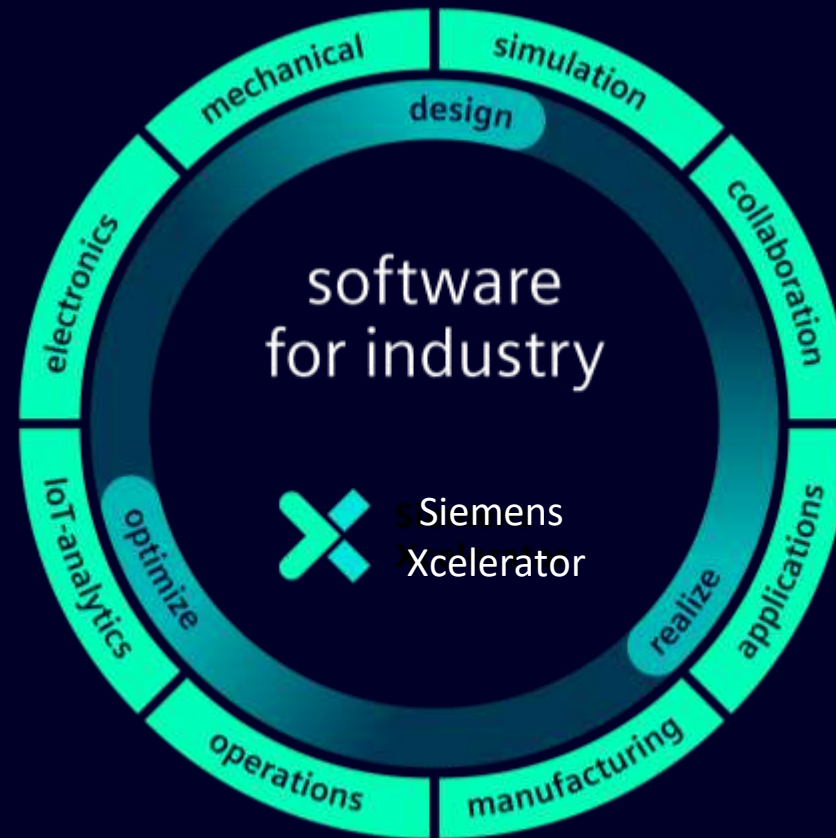
E/E systems development

Opcenter, Tecnomatix, NX CAM

Manufacturing operations management

Xcelerator Data Hub & BI

Data Integration & BI



Teamcenter, Polarion

Product & Application lifecycle management

Supplyframe

Sourcing Intelligence & Procurement

Supply Chain Suite, AX4

Supply Chain Management / Logistics

Valor, HyperLynx

Electronics systems verification

Xpedition, PADs

Electronic systems design

Calibre, Aprisa, Catapult, Tanner

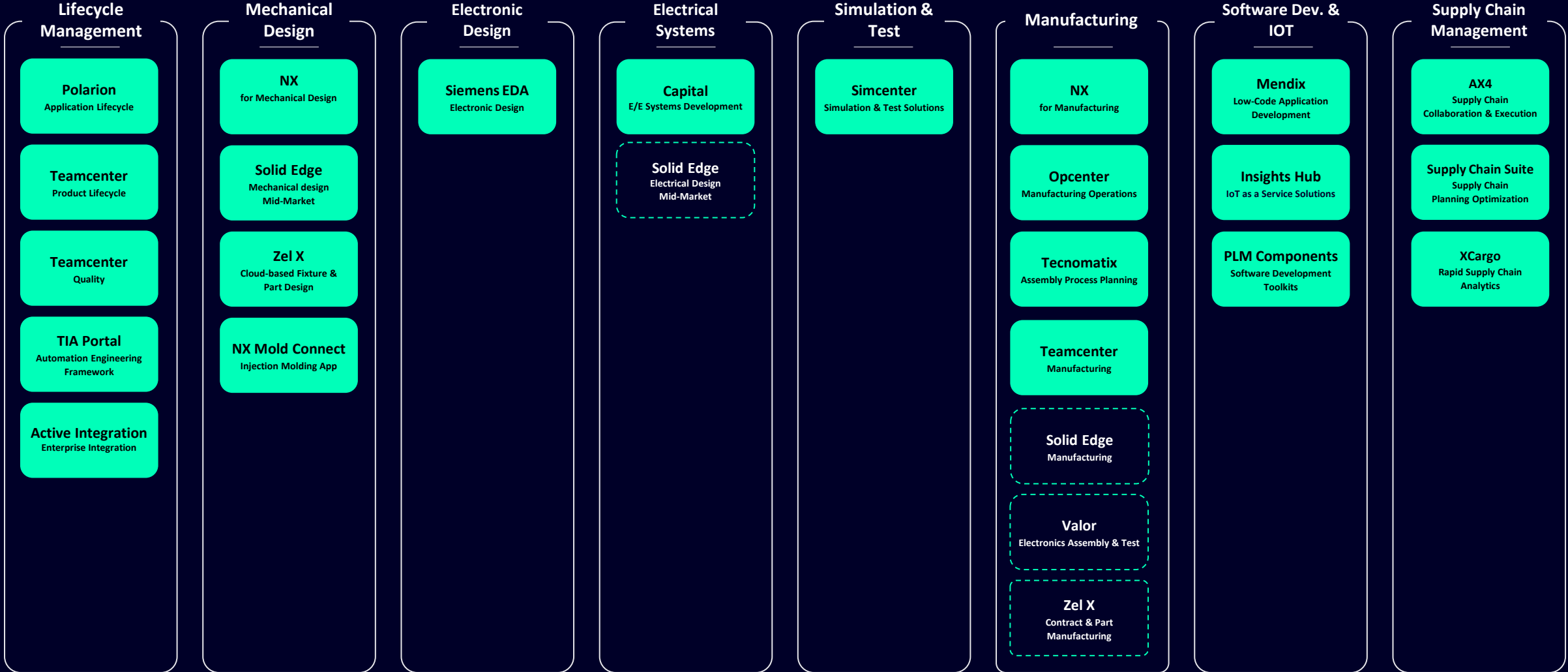
Integrated circuit design

Tessent, Questa, Veloce, Analog FastSPICE, Symphony, mPower, Power Pro

Integrated circuit verification

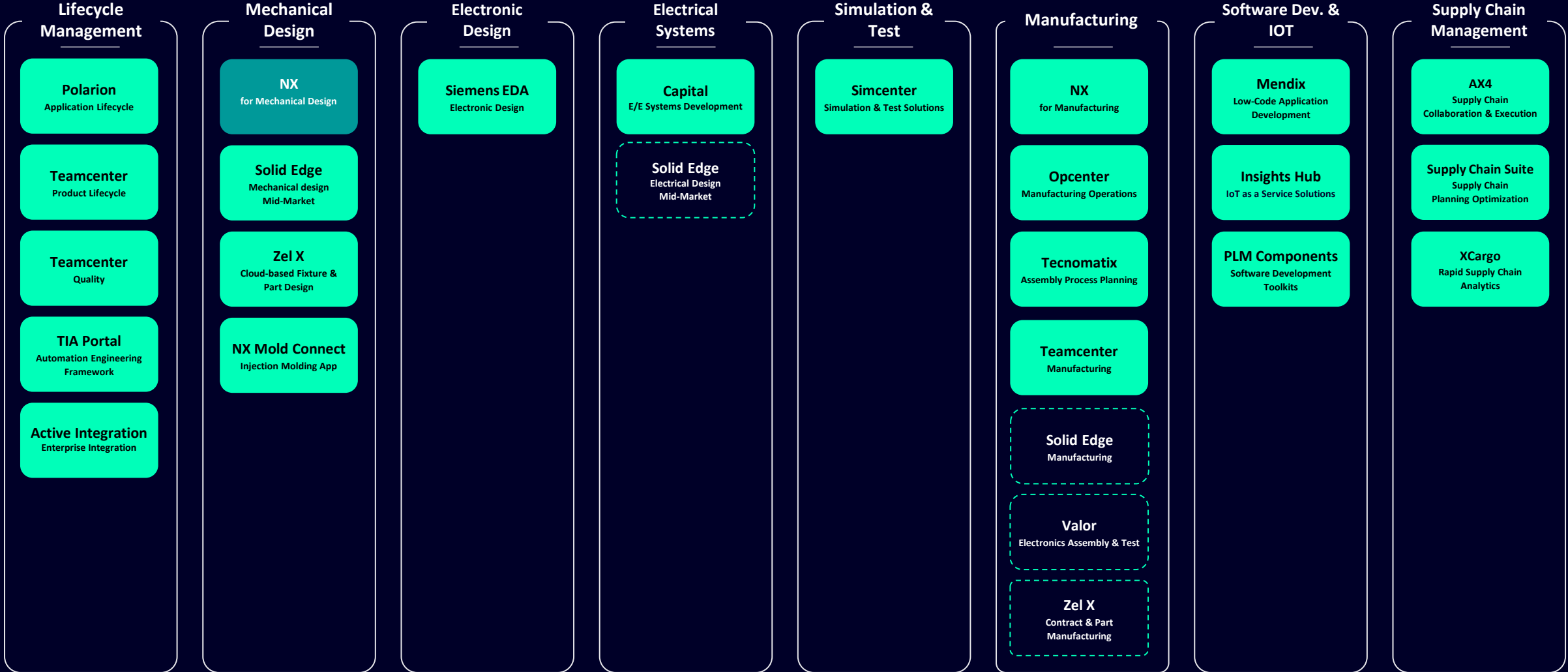
Siemens Xcelerator

Software and products

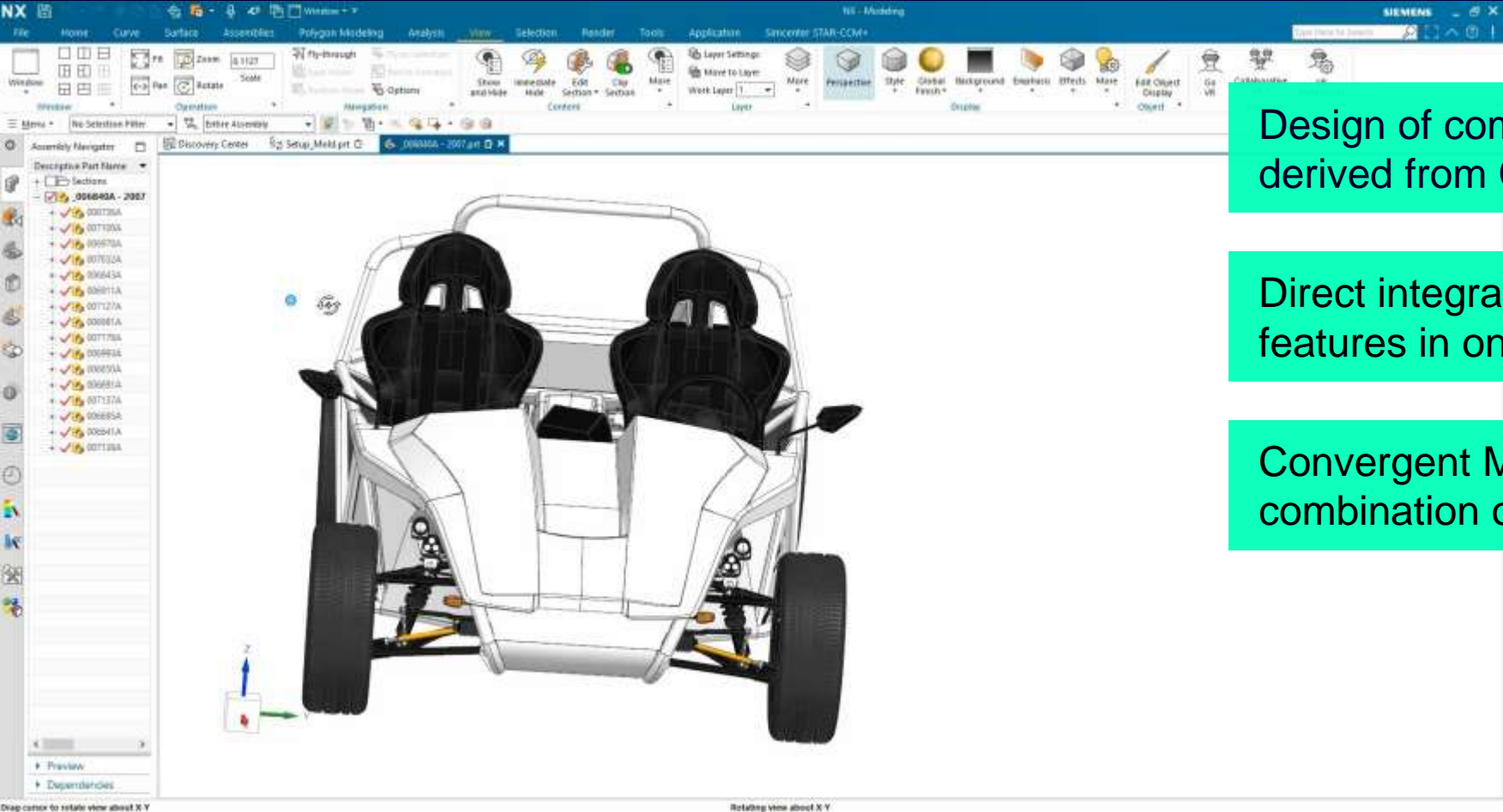


Siemens Xcelerator

Software and products



Derive Design of Composite Mold from CAD Geometry in Siemens NX

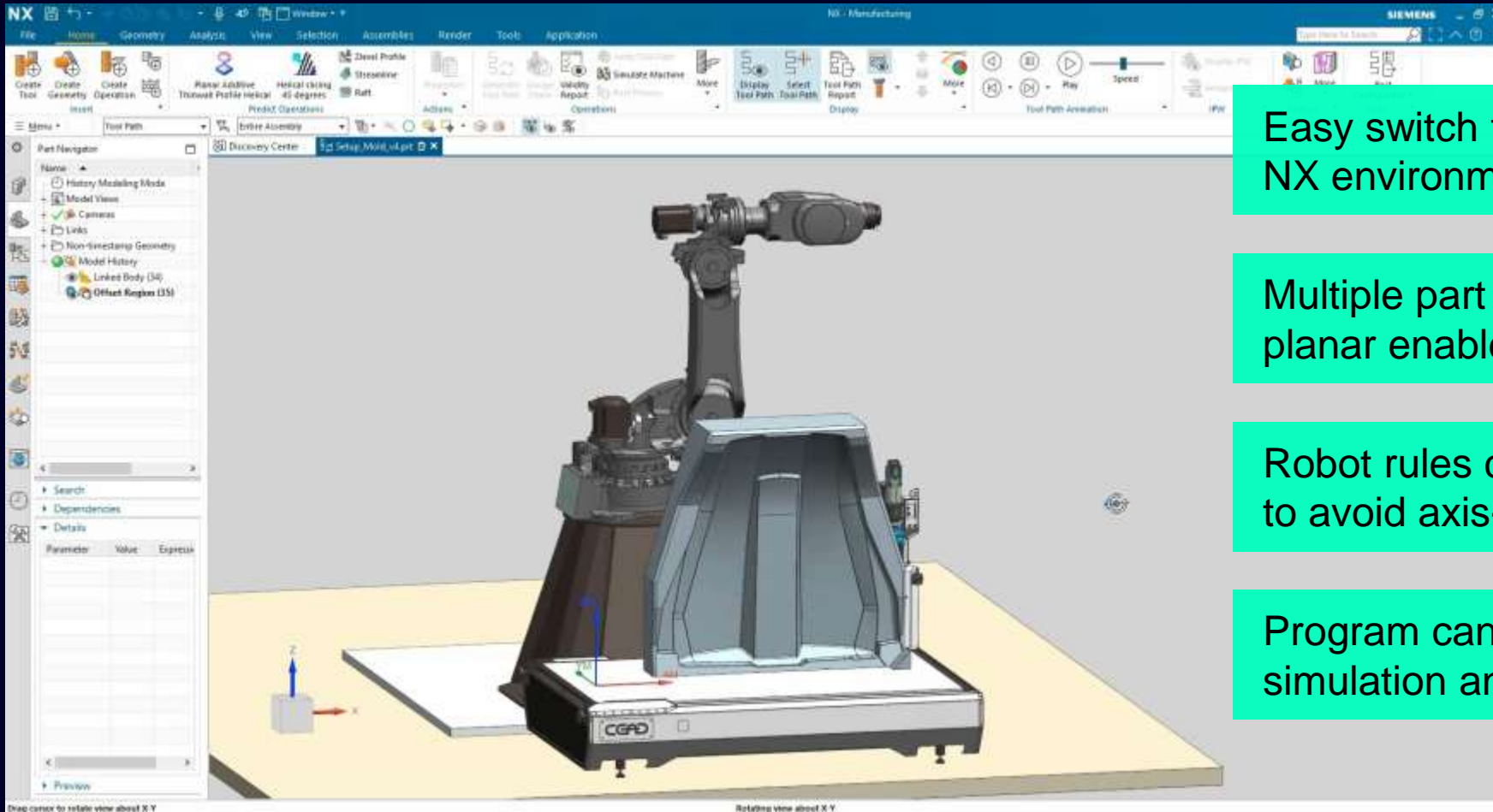


Design of composite mold can be easily derived from CAD Data of SimRod

Direct integration of CAD and CAM features in one NX

Convergent Modeling enables combination of facet data and B-Rep

Preparation for Additive Manufacturing of Composite Mold in NX CAM Multi Axis Deposition



Easy switch from CAD to CAM in same NX environment

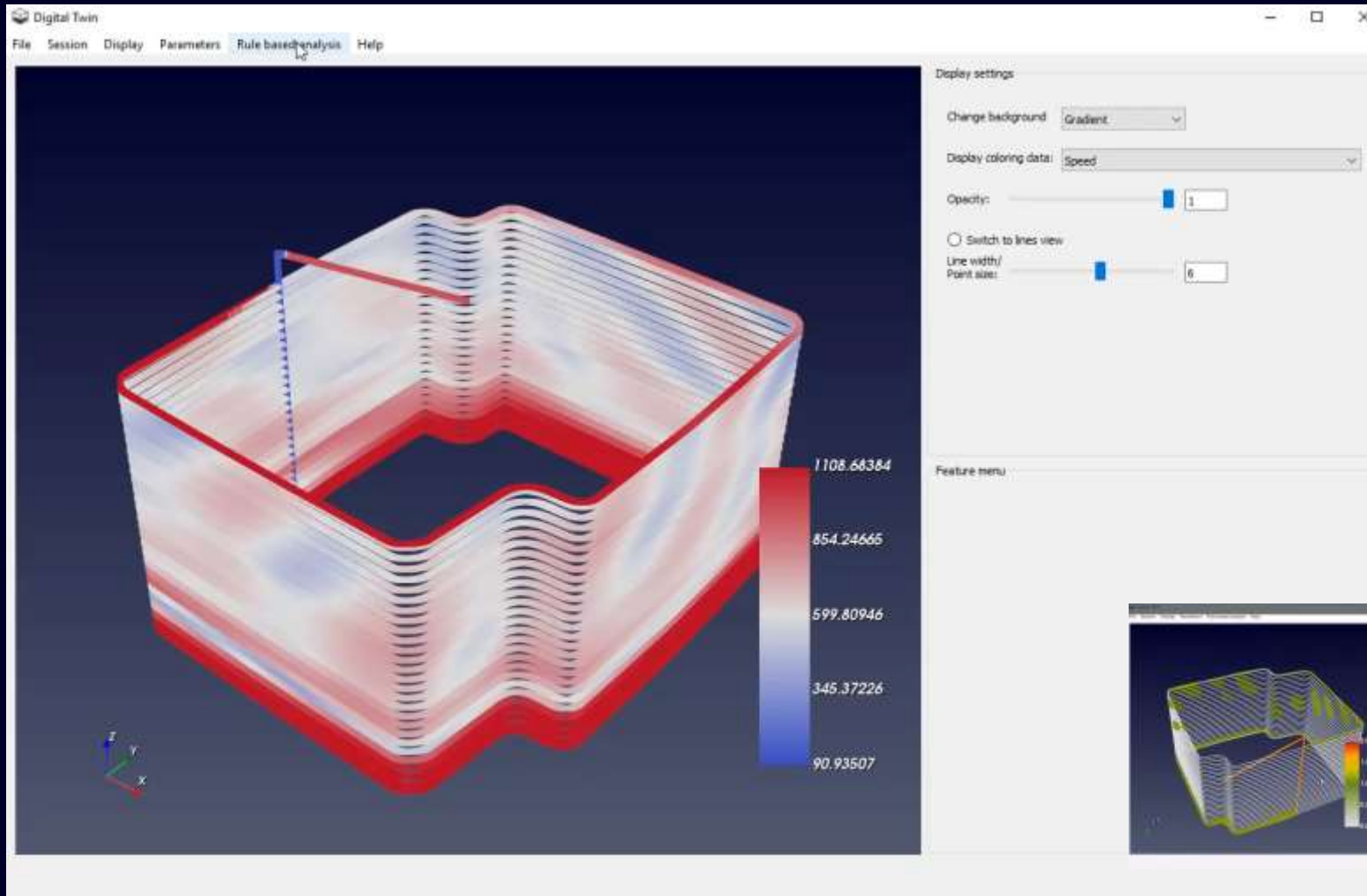
Multiple part slicing strategies e.g. non-planar enable full flexibility

Robot rules can be applied and verified to avoid axis-limits or singularities

Program can be verified using machine simulation and IPW*

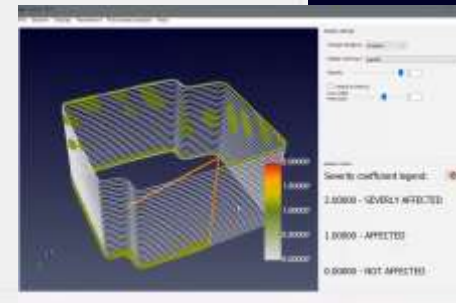
*IPW = in process workpiece simulation

“Geo Mapping” on base of Sinumerik Integrate Tools



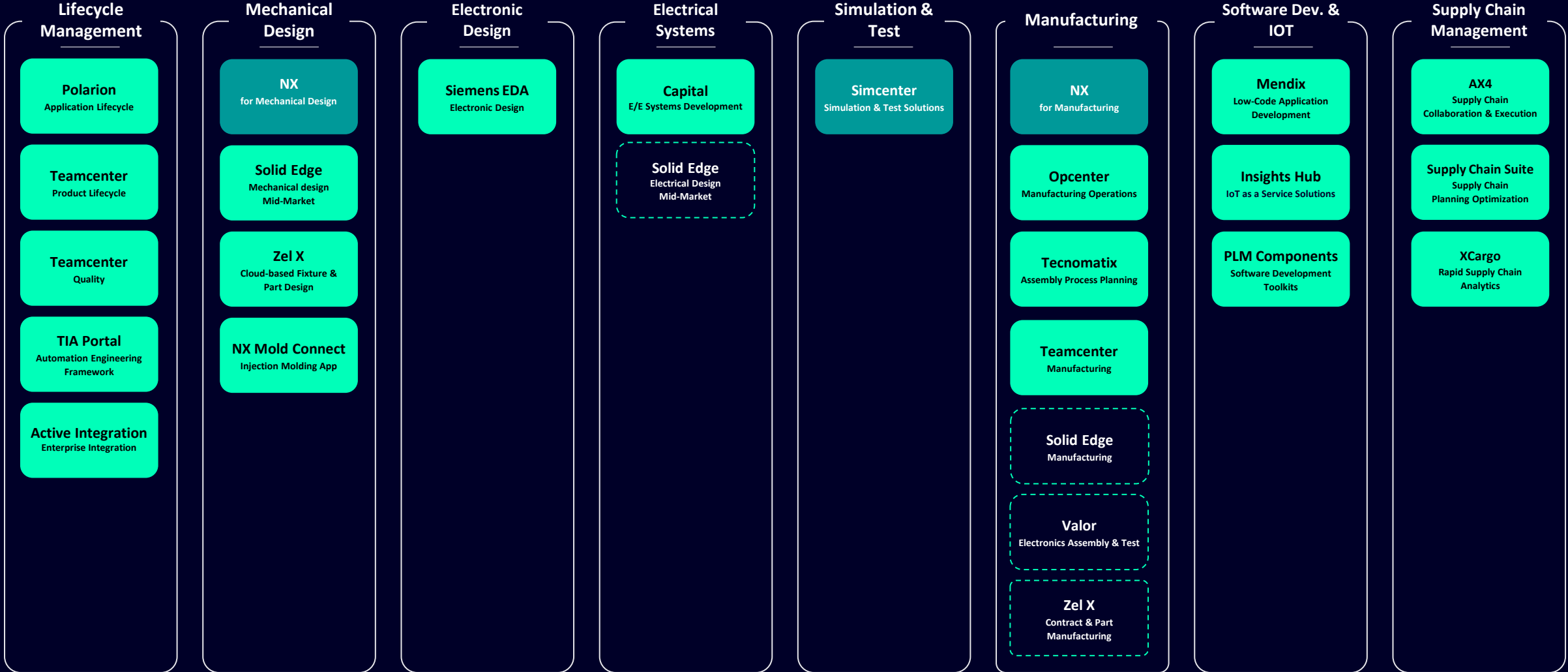
Interactive definition of rules for impacting parameters

- Parameter limits, e.g. layer height during LMD process
- Definition of display style



Siemens Xcelerator

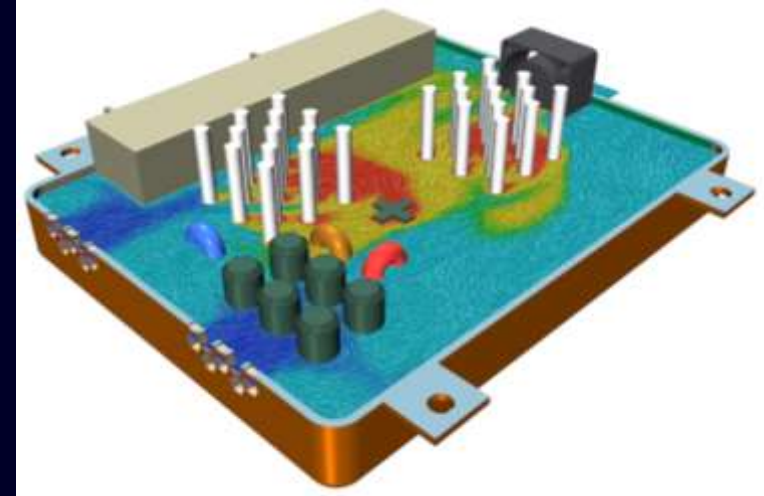
Software and products



Multidisciplinary Usage

Design optimizations

- Product optimizations are complex
 - Combination of at least CAD and CAE necessary
- [Design Space Explorer](#) including optimization methods



Siemens Xcelerator

Software and products

